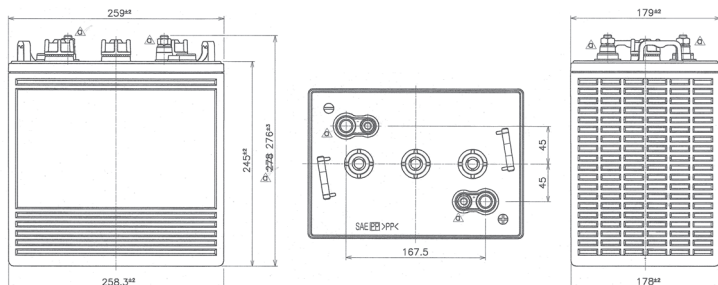


FLOODED

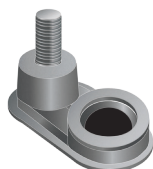
FDC Series are Deep Cycle liquid electrolyte batteries specifically designed for small traction applications (requiring deep discharges). With robust design made of thick positive & negative grid plates in a special alloy, the FDC Series offer low self-discharge and ensure a long service life with high resistance to cycles. This range is ideal for golf cart applications, aerial work platform, cleaning machine, solar, ..

DIMENSIONS & WEIGHT

LENGTH	259±2mm
WIDTH	179±2mm
TOTAL HEIGHT	278±2mm
ELECTROLYTE	5.4L
GROSS WEIGHT	29.5kg



TERMINAL HEIGHT



Terminal Height (mm)	38
Torque Value in-lb (Nm)	95 - 105 (11 - 2)
Bolt	5/16"

SPECIFICATION

VOLTAGE	6v	CAPACITY (100h)	266Ah
CAPACITY (25A)	488min	CAPACITY (20h)	240Ah
CAPACITY (75A)	132min	CAPACITY (10h)	221Ah
		CAPACITY (5h)	195Ah

Operating temperature	-20°C to +45°C
	At temperatures below 0°C maintain a state of charge higher than 60%.

Capacity affect by temp.	40°C/104°F	105%
	30°C/86°F	100%
	0°C/0°F	80%

CHARGE METHOD

Phase 1 (Constant current)

Constant current charge at 24~31.2 amperes until the battery voltage measures between 7.14~7.29 V/Battery(25°C) on charge voltage.

Phase 2 (Constant voltage)

Constant voltage charge at 7.14~7.29 V/Battery(25°C) until the current measures between 2.4~7.2 amperes.

Phase 3 (Constant current)

Constant current charge at 2.4~7.2 amperes until the battery voltage measures between 7.5~8.1 V/battery(25°C) or until dV/dt reaches to less than 0.035.

Do not install or charge batteries in a sealed or non-ventilated compartment. Constant under or overcharging will damage the battery and shorten its life as with any battery.

APPLICATIONS



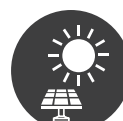
Aerial Work Platform



Golf Cart

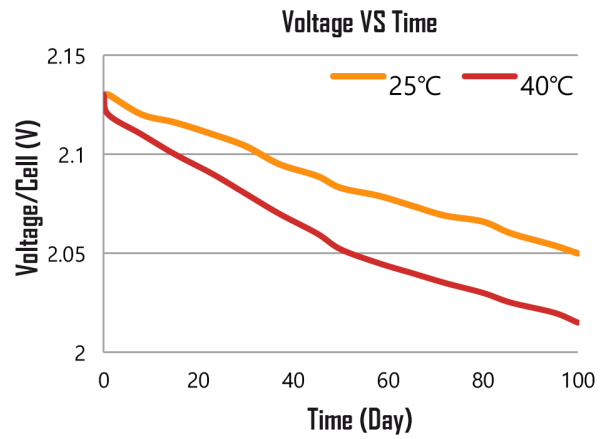
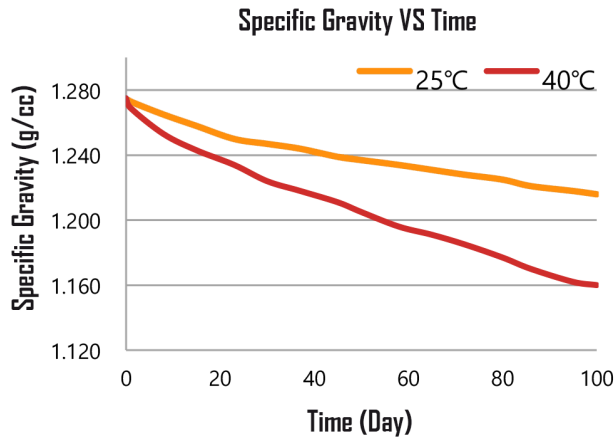


Floor Cleaning Machine

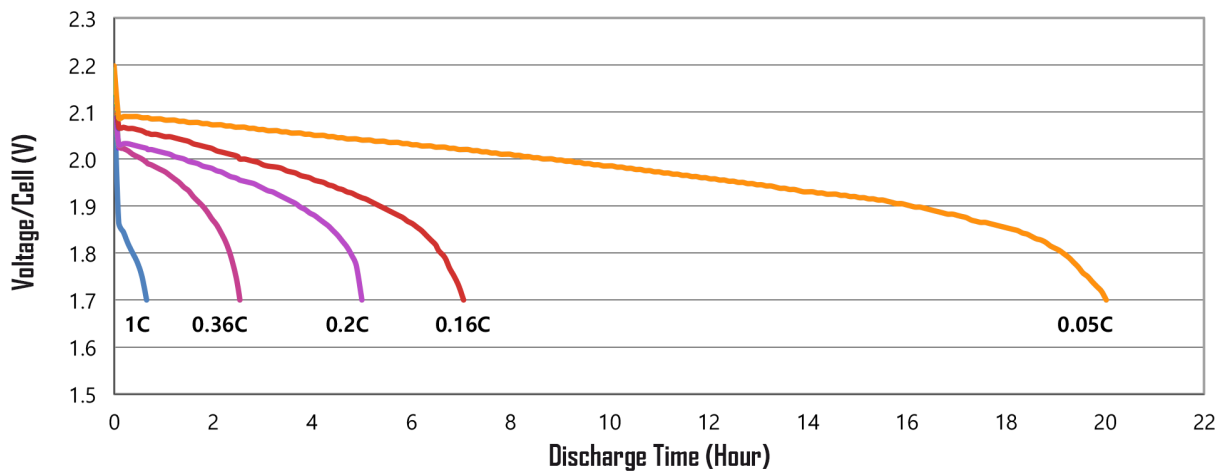


Solar

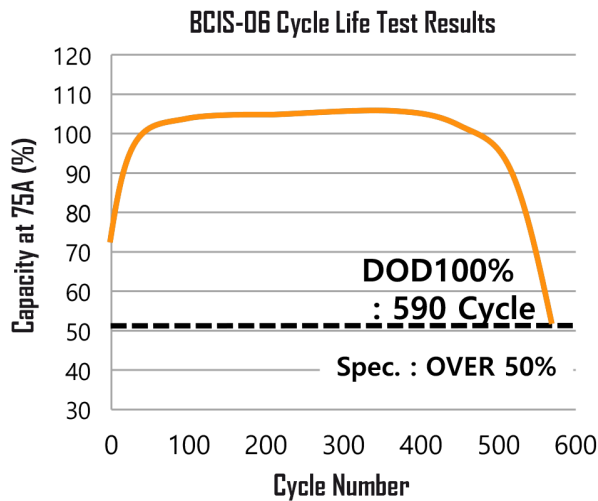
SELF DISCHARGE DATA



CAPACITY BY DISCHARGE CURRENT



CYCLE SERVICE LIFE: BCIS-06 (DOD 100% 27°C)



DEPTH OF DISCHARGE (DOD) & CYCLE NUMBER

