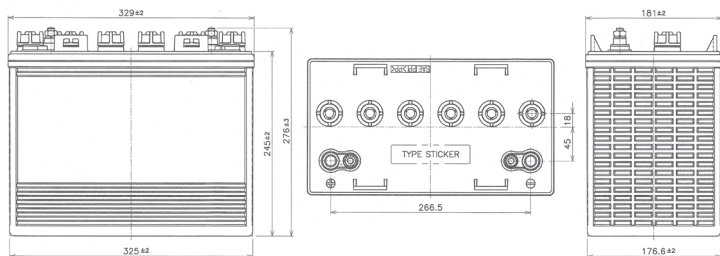


## FLOODED

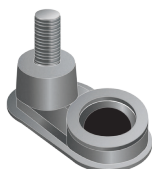
FDC Series are Deep Cycle liquid electrolyte batteries specifically designed for small traction applications (requiring deep discharges). With robust design made of thick positive & negative grid plates in a special alloy, the FDC Series offer low self-discharge and ensure a long service life with high resistance to cycles. This range is ideal for golf cart applications, aerial work platform, cleaning machine, solar, ..

### DIMENSIONS & WEIGHT

LENGTH	329±2mm
WIDTH	181±2mm
TOTAL HEIGHT	278±2mm
ELECTROLYTE	6.8L
GROSS WEIGHT	38.5kg



### TERMINAL HEIGHT



Terminal Height (mm)	38
Torque Value in-lb (Nm)	95 - 105 (11 - 2)
Bolt	5/16"

### SPECIFICATION

VOLTAGE	12v	CAPACITY (100h)	166Ah
CAPACITY (25A)	280min	CAPACITY (20h)	150Ah
CAPACITY (75A)	70min	CAPACITY (10h)	134Ah
		CAPACITY (5h)	120Ah

Operating temperature	-20°C to +45°C
	At temperatures below 0°C maintain a state of charge higher than 60%.

Capacity affect by temp.	40°C/104°F	105%
	30°C/86°F	100%
	0°C/0°F	80%

### CHARGE METHOD

#### Phase 1 (Constant current)

Constant current charge at 15~19.5 amperes until the battery voltage measures between 14.28~14.58 V/Battery (25°C) on charge voltage.

#### Phase 2 (Constant voltage)

Constant voltage charge at 14.28~14.58 V/Battery (25°C) until the current measures between 1.5~4.5 amperes.

#### Phase 3 (Constant current)

Constant current charge at 1.5~4.5 amperes until the battery voltage measures between 15~16.2V/battery (25°C) or until dV/dt reaches to less than 0.035.

Do not install or charge batteries in a sealed or non-ventilated compartment. Constant under or overcharging will damage the battery and shorten its life as with any battery.

### APPLICATIONS



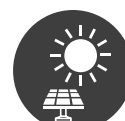
Aerial Work Platform



Golf Cart

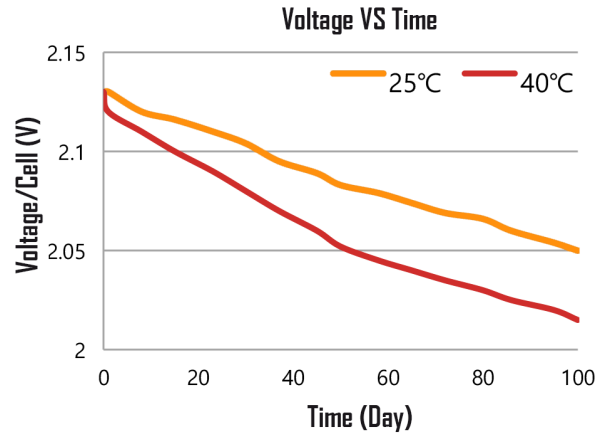
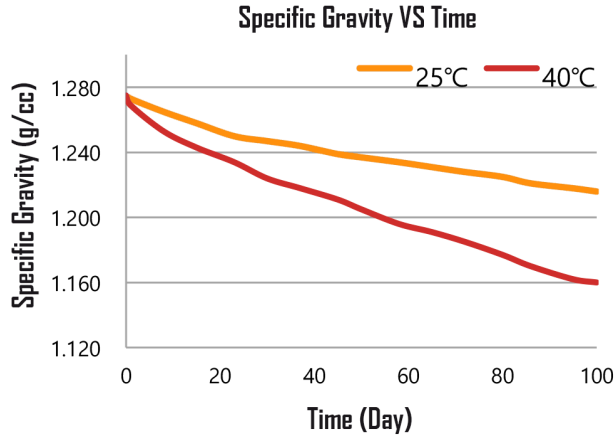


Floor Cleaning Machine

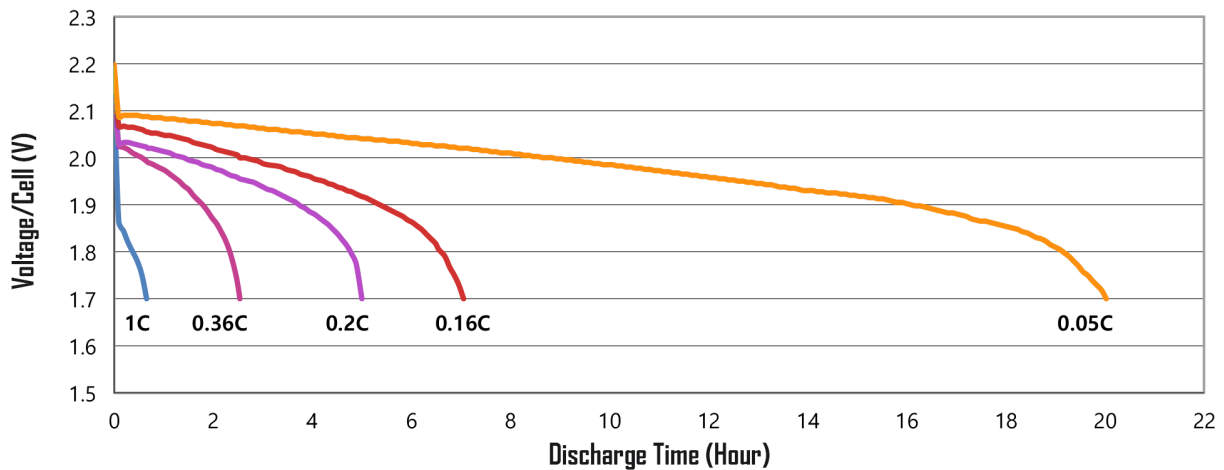


Solar

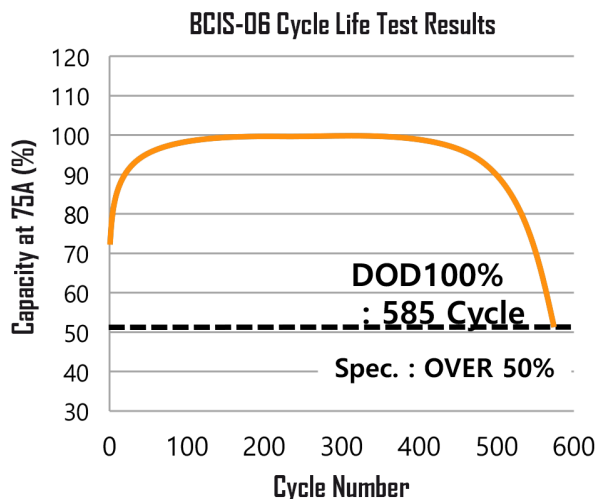
## SELF DISCHARGE DATA



## CAPACITY BY DISCHARGE CURRENT



## CYCLE SERVICE LIFE: BCIS-06 (DOD 100% 27°C)



## DEPTH OF DISCHARGE (DOD) & CYCLE NUMBER

