



## SPECIFICATION

VOLTAGE

**8v**

CAPACITY (25A)

**295min**

CAPACITY (56A)

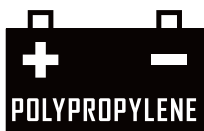
**117min**

CAPACITY (20h)

**170Ah**

CAPACITY (5h)

**145Ah**

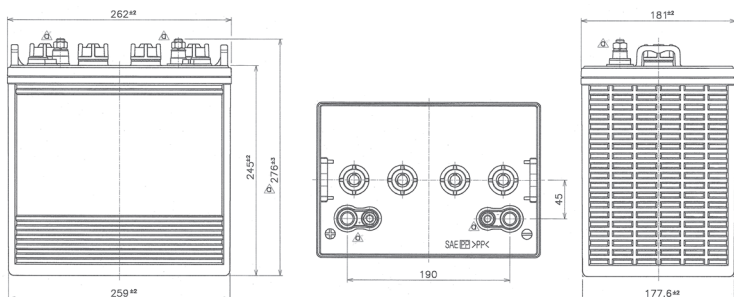


**FLOODED**

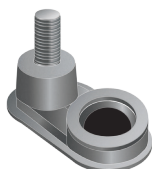
FDC Series are Deep Cycle liquid electrolyte batteries specifically designed for small traction applications (requiring deep discharges). With robust design made of thick positive & negative grid plates in a special alloy, the FDC Series offer low self-discharge and ensure a long service life with high resistance to cycles. This range is ideal for golf cart applications, aerial work platform, cleaning machine, solar, ..

## DIMENSIONS & WEIGHT

LENGTH	262±2mm
WIDTH	181±2mm
TOTAL HEIGHT	278±2mm
ELECTROLYTE	5.8L
GROSS WEIGHT	28.6kg



## TERMINAL HEIGHT



Terminal Height (mm)	38
Torque Value in-lb (Nm)	95 - 105 (11 - 2)
Bolt	5/16"

Operating temperature	-20°C to +45°C
	At temperatures below 0°C maintain a state of charge higher than 60%.

Capacity affect by temp.	40°C/104°F	105%
	30°C/86°F	100%
	0°C/0°F	80%

## CHARGE METHOD

### Phase 1 (Constant current)

Constant current charge at 17~22.1 amperes until the battery voltage measures between 9.52~9.72 V/Battery(25°C) on charge voltage.

### Phase 2 (Constant voltage)

Constant voltage charge at 9.52~9.72 V/Battery(25°C) until the current measures between 1.7~5.1 amperes.

### Phase 3 (Constant current)

Constant current charge at 1.7~5.1 amperes until the battery voltage measures between 10~10.8 V/battery(25°C) or until dV/dt reaches to less than 0.035.

Do not install or charge batteries in a sealed or non-ventilated compartment. Constant under or overcharging will damage the battery and shorten its life as with any battery.

## APPLICATIONS



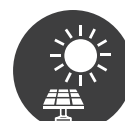
Aerial Work Platform



Golf Cart

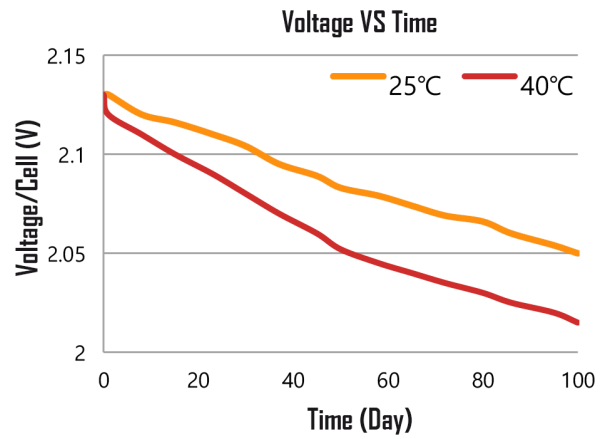
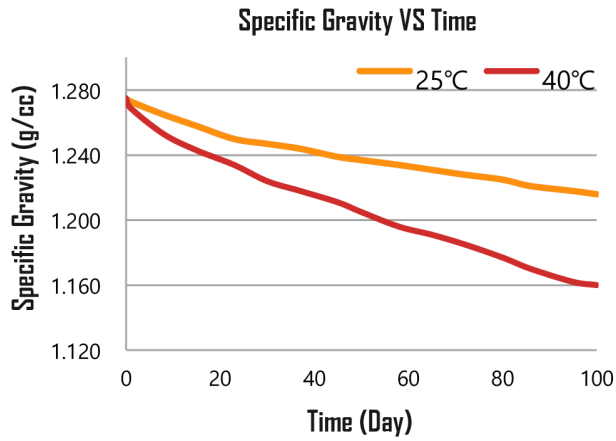


Floor Cleaning Machine

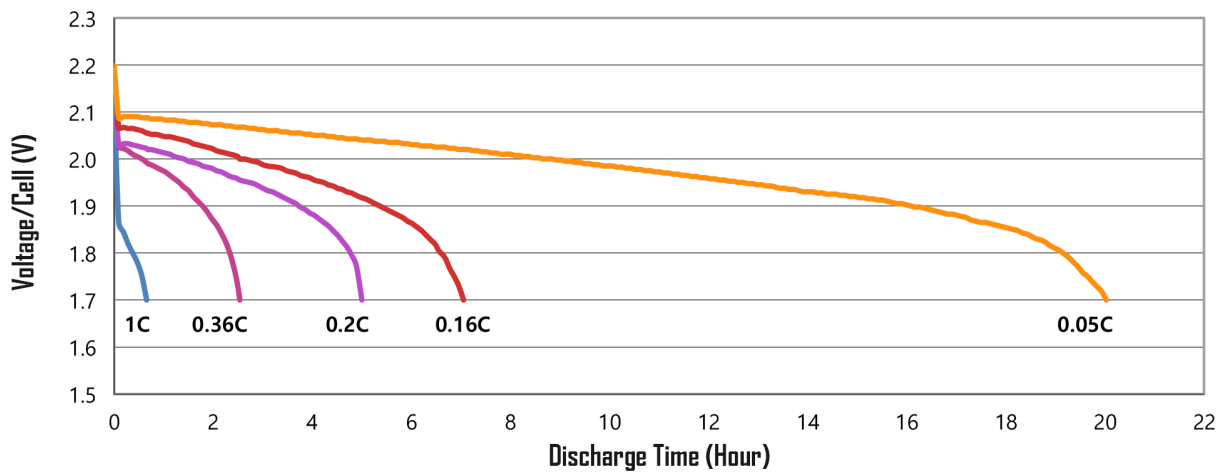


Solar

## SELF DISCHARGE DATA



## CAPACITY BY DISCHARGE CURRENT



## CYCLE SERVICE LIFE: BCIS-06 (DOD 100% 27°C)

