



NON-SPILLABLE

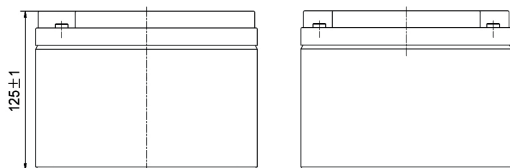
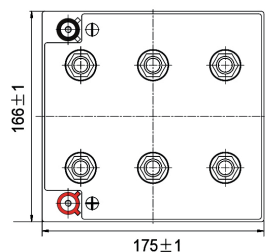
CYCLE LIFE UP TO 800

+ GEL

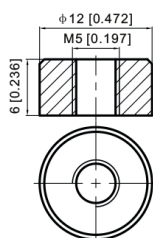
FPG Series are deep cycle batteries specially designed for long duration cyclic applications, ie with use in charge and then intensive discharge. With innovative GEL valve regulated technology and special plate design, the FPG Series ensure higher cyclic performance and higher recovery capability after deep discharge than cyclic AGM batteries. This range is ideal for applications such as mobility, golf, marine & leisure and renewable energies storage.

DIMENSIONS & WEIGHT

LENGHT	166±2mm
WIDTH	175±2mm
TOTAL HEIGHT	125±2mm
WEIGHT	8.5kg (tolerance ± 3%)



TERMINAL (MM)



SPECIFICATION

Nominal voltage	12V (6 cells)
Nominal capacity	26Ah (20hr)
Cycle life	Up to 600 cycles at 80% DOD* (80% capacity - 20°C) Up to 800 cycles at 50% DOD* (80% capacity - 20°C)
Internal resistance	Approx 13.5mΩ
Terminal	T12
Max. discharge current	312A (5 sec)
Reference capacity	26.0Ah (20hr, 1.80V/cell, 25°C/77°F) 24.2Ah (10hr, 1.75V/cell, 25°C/77°F) 20.8Ah (5hr, 1.75V/cell, 25°C/77°F) 18.1Ah (3hr, 1.75V/cell, 25°C/77°F) 14.3Ah (1hr, 1.67V/cell, 25°C/77°F)

Charge voltage	13.5V ~ 13.8V 25°C/77°F
Standby use voltage	Temperature compensation: -20mV/°C/Cell
Cycle use voltage	14.4V ~ 15.0V 25°C/77°F Temperature compensation: -30mV/°C/Cell
Operating temp. range	Discharge: -20°C ~ 55°C Charge: 0°C ~ 40°C Storage: -20°C ~ 50°C
Nominal operating temp. range	25°C ± 3°C / 77°F ± 5°F
Self discharge	Can be stored for up to 9 months at 25°C/77°F and then recharging is recommended. Monthly self-discharge ratio is less than 2% at 25°C/77°F
Capacity affected by temp.	40°C/104°F 103% 25°C/77°F 100% 0°C/32°F 86%
Container material	A.B.S. UL94-HB

*DOD = Depth of discharge

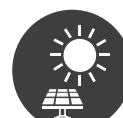
APPLICATIONS



Mobility



Golf Caddy



Solar



Leisure



Marine



Wind

APPROVALS

ISO9001 - Quality management system
ISO14001 - Environmental management System
Approved for transport by Air (IATA)

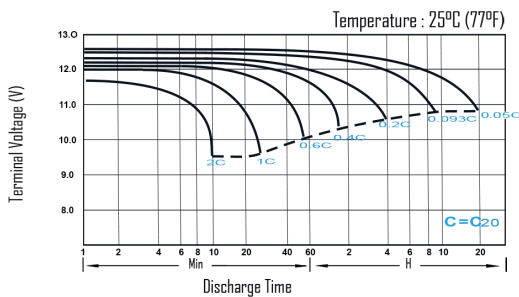
CONSTANT CURRENT DISCHARGE (AMPERES) AT 25°C/77°F

F.V/Time	20min	30min	45min	1h	2h	3h	4h	5h	6h	7h	8h	9h	10h	20h
1.85V/cell	22.0	17.3	13.2	11.0	6.99	5.33	4.41	3.81	3.29	2.91	2.63	2.40	2.27	1.25
1.80V/cell	25.2	19.3	14.5	12.2	7.57	5.71	4.68	4.00	3.45	3.05	2.75	2.52	2.37	1.30
1.75V/cell	28.3	21.2	15.7	13.0	8.02	6.03	4.90	4.16	3.58	3.16	2.84	2.60	2.42	1.33
1.70V/cell	30.5	22.7	16.7	13.8	8.50	6.28	5.06	4.29	3.70	3.26	2.93	2.67	2.48	1.34
1.67V/cell	31.7	23.6	17.3	14.3	8.72	6.48	5.19	4.38	3.76	3.31	2.97	2.70	2.50	1.36
1.60V/cell	34.4	25.3	18.5	15.2	9.07	6.74	5.38	4.51	3.85	3.38	3.02	2.76	2.55	1.38

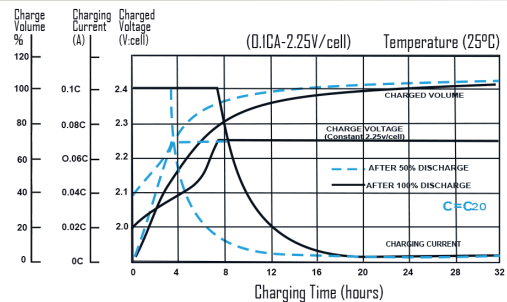
CONSTANT POWER DISCHARGE (WATTS/CELL) AT 25°C/77°F

F.V/Time	20min	30min	45min	1h	2h	3h	4h	5h	6h	7h	8h	9h	10h	20h
1.85V/cell	42.1	33.3	25.5	21.5	13.7	10.4	8.68	7.52	6.52	5.78	5.23	4.78	4.53	2.49
1.80V/cell	47.6	36.8	28.0	23.6	14.7	11.1	9.17	7.88	6.82	6.03	5.46	5.02	4.72	2.59
1.75V/cell	52.9	40.1	30.0	25.1	15.6	11.8	9.57	8.16	7.04	6.23	5.62	5.16	4.81	2.64
1.70V/cell	56.4	42.6	31.6	26.4	16.4	12.2	9.86	8.39	7.27	6.43	5.78	5.29	4.92	2.67
1.67V/cell	58.0	43.8	32.5	27.2	16.7	12.5	10.1	8.54	7.36	6.50	5.86	5.35	4.97	2.69
1.60V/cell	62.2	46.4	34.7	28.8	17.3	13.0	10.4	8.78	7.52	6.62	5.95	5.45	5.06	2.73

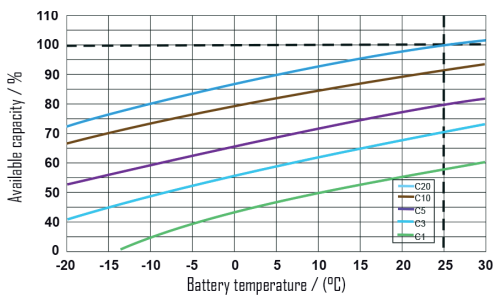
DISCHARGE CHARACTERISTICS



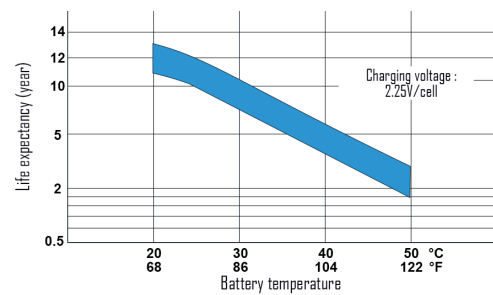
FLOAT CHARGING CHARACTERISTICS



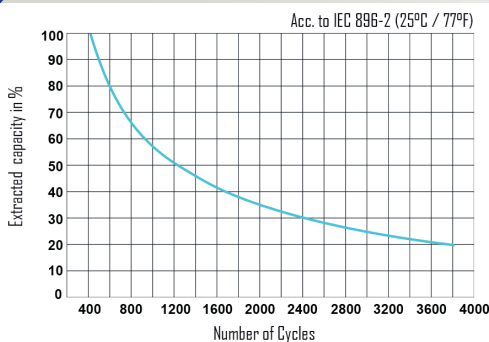
TEMPERATURE EFFECTS IN RELATION TO BATTERY CAPACITY



EFFECT OF TEMPERATURE ON LONG TERM FLOAT LIFE



CYCLE LIFE IN RELATION TO DEPTH OF DISCHARGE



SELF DISCHARGE CHARACTERISTICS

