

FLOODED RANGE

High performance & resistance

FDC Series are Deep Cycle liquid electrolyte batteries specifically designed for small traction applications (requiring deep discharges).

With robust design made of thick positive & negative grid plates in a special alloy, the FDC Series offer low self-discharge and ensure a long service life with high resistance to cycles.

GENERAL INFORMATIONS

- Technology: flooded lead acid
- Available voltages: 6V, 8V, 12V
- Capacities from 150Ah to 260Ah
- Cycle life:
 - Up to 800 cycles at 80% DOD* (50% capacity @20°C)
 - Up to 1100 cycles at 50% DOD* (50% capacity @20°C)
- Case material: polypropylene

*Depth Of Discharge



FEATURES

- Good deep discharge resilience performance
- Low self-discharge
- Low maintenance
- Polypropylene case material = shock-resistant & acid-resistant
- Terminals with special lead alloy designed for high vibration resistance
- Reinforced grid plates for optimal cyclic use
- Negative plate: 99.9% pure lead with hard paste feature, specific additives for deep cycle purpose
- Very good charging efficiency
- Lower water consumption and reduced thermal runaway possibilities
- Good performance under critical ambient temperature conditions

APPLICATIONS



FLOODED RANGE

High performance & resistance

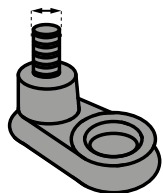


Fulbat designation	Voltage (V)	Capacity Ah (20Hr)	Capacity Ah (5Hr)	Reserve capacity (Capacity minutes)		Dimensions mm (±2mm)				Net weight (kg)	Terminals	Layout
				@25A (min)	@75A (min)	L	W	H	Total height			
FDC-605	6	210	175	383	105	259	179	245	276	26.9	EHPT	
FDC-105	6	225	185	447	115	259	179	245	276	28.2	EHPT	
FDC-125	6	240	195	488	132	259	179	245	276	29.5	EHPT	
FDC-875	8	170	145	295	75	262	181	245	276	28.6	EHPT	
FDC-1275	12	150	120	280	70	329	181	245	276	38.5	EHPT	

TERMINAL CONFIGURATIONS

EHPT (Embedded High Profil Terminal)

Ø 8mm



- Terminal height: 38mm
- Torque values: 11 – 12nm
- Bolt terminal: M8



CYCLE LIFE

