

FPH12-750W

Datasheet



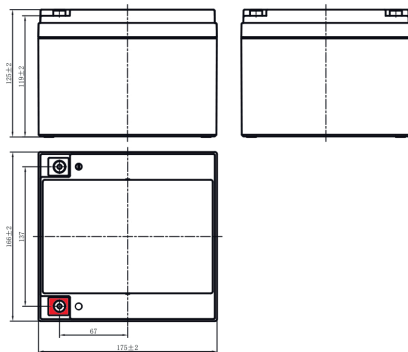
AGM

NON-SPILLABLE

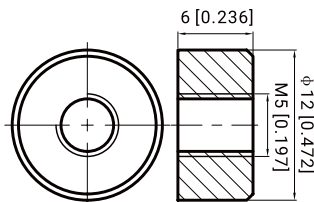
FPH Series are high rate batteries with 12 years design life in float service. With advanced AGM valve regulated technology and high purity raw material, the FPH batteries ensure reliable standby service life and high performance during high current discharge requirements. They have been designed specifically for applications where high current loads are required such as UPS & data centers.

DIMENSIONS & WEIGHT

Length	166±2mm
Width	175±2mm
Total height	125±2mm
Gross weight	8.6kg



TERMINAL



SPECIFICATIONS

Nominal voltage	12V (6 cells)
Nominal rate	126W/Cell/1.60V/10 min
Nominal capacity	25.2Ah (10hr)
Design life	12 years at 25°C
Internal resistance	Approx 12.0mΩ
Terminal	T12
Max. discharge current	360A (5 sec)
Reference capacity	25.2Ah (10hr, 1.80V/cell, 25°C) 24.6Ah (8hr, 1.80V/cell, 25°C) 21.9Ah (5hr, 1.75V/cell, 25°C) 19.3Ah (3hr, 1.75V/cell, 25°C) 16.9Ah (1hr, 1.67V/cell, 25°C)
Charge voltage (25°C)	
Float	7.5V
Temp. coefficient	-30mV/°C/Cell
Equalization	14.4V ~ 15.0V
Operating temp. range	Discharge: -20°C ~ 60°C Charge: 0°C ~ 50°C Storage: -20°C ~ 60°C
Nominal operating temp. range	25°C ± 3°C
Self discharge	Can be stored for up to 6 months at 25°C and then recharging is recommended. Monthly self-discharge ratio is less than 3% at 25°C
Capacity affected by temp.	40°C 103% 25°C 100% 0°C 86%
Container material	A.B.S. UL94-HB UL94-V0 optional

APPROVALS

ISO9001 - Quality management system
ISO14001 - Environmental management System
Approved for transport by Air (IATA)
Designed in accordance with IEC 60896-21/22

APPLICATIONS



FPH12-750W

Datasheet



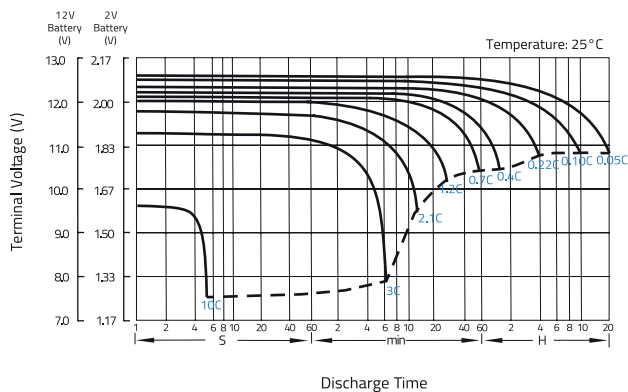
CONSTANT CURRENT DISCHARGE (A) @25°C

F.V./Time	5min	10min	15min	20min	30min	45min	1h	2h	3h	4h	5h	8h	10h	20h
1.85V/cell	63.9	47.1	40.0	33.3	24.3	17.6	13.9	7.96	5.83	4.71	4.00	2.87	2.42	1.41
1.80V/cell	74.6	52.8	43.9	35.6	25.8	18.5	14.6	8.40	6.18	4.96	4.20	3.00	2.52	1.43
1.75V/cell	84.2	58.2	47.9	38.7	27.4	19.6	15.4	8.81	6.43	5.17	4.37	3.08	2.58	1.45
1.70V/cell	92.7	62.8	51.2	40.9	28.7	20.4	16.0	9.11	6.64	5.32	4.47	3.14	2.62	1.47
1.67V/cell	100.5	67.1	54.0	42.6	30.0	21.1	16.5	9.38	6.80	5.42	4.56	3.18	2.66	1.48
1.60V/cell	105.7	70.3	55.8	44.0	30.9	21.6	16.9	9.55	6.91	5.52	4.65	3.22	2.70	1.49

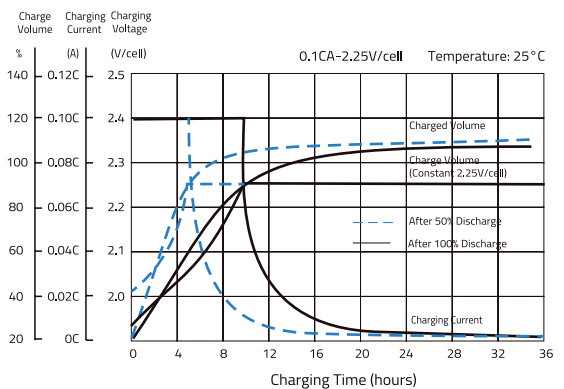
CONSTANT POWER DISCHARGE (W/CELL) @25°C

F.V./Time	5min	10min	15min	20min	30min	45min	1h	2h	3h	4h	5h	8h	10h	20h
1.85V/cell	118.8	88.4	75.8	63.6	46.8	34.1	27.1	15.6	11.5	9.35	7.98	5.76	4.87	2.84
1.80V/cell	137.3	98.5	82.8	67.8	49.5	35.8	28.3	16.4	12.2	9.82	8.34	6.01	5.06	2.88
1.75V/cell	153.2	107.6	89.9	73.3	52.3	37.6	29.8	17.2	12.6	10.2	8.67	6.15	5.17	2.91
1.70V/cell	166.8	115.1	95.4	77.1	54.6	39.0	30.9	17.7	13.0	10.5	8.84	6.25	5.23	2.94
1.67V/cell	178.9	121.9	99.8	79.8	56.7	40.2	31.8	18.2	13.3	10.6	8.99	6.32	5.29	2.95
1.60V/cell	185.0	126.1	102.1	81.7	58.0	41.0	32.5	18.5	13.5	10.8	9.13	6.38	5.35	2.97

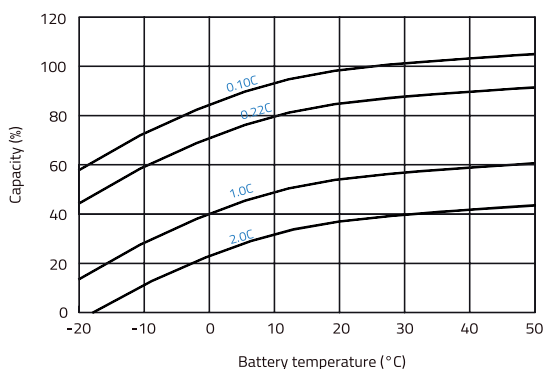
DISCHARGE CHARACTERISTICS



FLOAT CHARGING CHARACTERISTICS



TEMPERATURE IN RELATION TO BATTERY CAPACITY



TEMPERATURE ON LONG TERM FLOAT LIFE

