

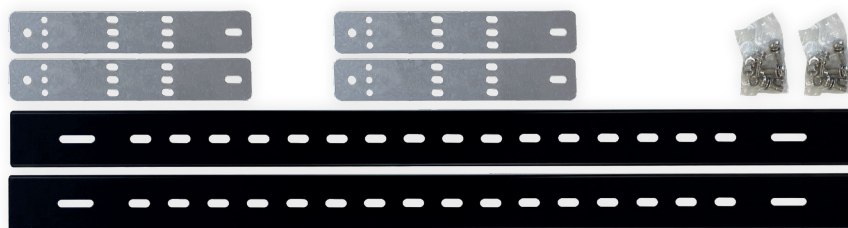
# ASSEMBLY PARTS

## INSTRUCTIONS



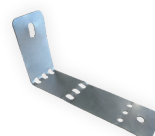
### 1. BOX CONTENT

2x black mounting bars.  
4x aluminium mounting clips.  
4x screws including spacers Ø 8mm.  
4x nuts Ø 8mm.  
8x screws including spacers Ø 6mm.  
8x nuts Ø 6mm.



### 2. FOLDING & PREPARING ALUMINIUM MOUNTING CLIPS

Prepare the aluminium mounting clips for installation on the display.  
Please fold as indicated in each step.



Step 1



Step 2



Step 3

### 3. ALUMINIUM MOUNTING CLIP INSTALLATION

Install the aluminium mounting clips around the display plastic tubes.  
The black mounting bar should be positioned as in the example.

Repeat the same installation for the 2<sup>nd</sup> black mounting bar.



### 4. FULBANK 2000 INSTALLATION

After installing the black mounting bars, you can install both Fulbank 2000.

To install both Fulbank 2000, you will need:

- 8x screws Ø 6mm.
- 8x spacers Ø 6mm.
- 8x nuts Ø 6mm.



### 5. FINAL RESULT

The Fulbat display is ready.  
You can start to charge your Lead-Acid and Lithium (LiFePO4) batteries.

