

FPC12-120

Datasheet

FULBAT[®]

CYCLIC BATTERY



AGM

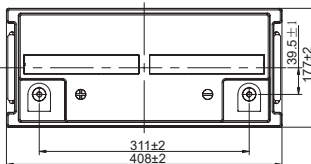
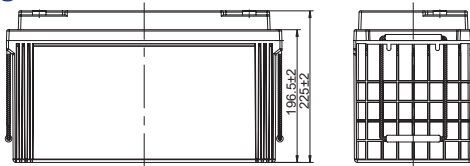


FPC Series are deep cycle batteries specially designed for long duration cyclic applications, ie with use in charge and then intensive discharge. With advanced AGM valve regulated technology and oversized negative plates, the FPC Series ensure very good cyclic performance with greater depth of discharge for mobility-type applications such as medical, golf and also renewable energies storage.

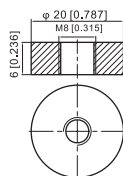
In harsh use conditions (high temperature, higher deep of discharge...), the Gel FPG range is recommended.

DIMENSIONS & WEIGHT

Length	408±2mm
Width	177±2mm
Total height	225±2mm
Gross weight	37.3kg



TERMINAL



SPECIFICATIONS

Nominal voltage	12V (6 cells)
Nominal capacity	120.0Ah (10hr)
Cycle life	(50% capacity @20°C) Up to 350 cycles at 100% DOD (50% capacity @20°C) Up to 800 cycles at 50% DOD
Internal resistance	Approx 3.6mΩ
Terminal	T11
Max. discharge current	2400A (5 sec)
Reference capacity	126.0Ah (20hr, 1.80V/cell, 25°C) 105.5Ah (5hr, 1.80V/cell, 25°C) 97.8Ah (3hr, 1.75V/cell, 25°C) 80.8Ah (2hr, 1.75V/cell, 25°C) 76.0Ah (1hr, 1.60V/cell, 25°C)
Charge voltage	2.23V ~ 2.27V at 25°C Temperature compensation: -20mV/°C/Cell
Standby use voltage	2.40V ~ 2.45V at 25°C Temperature compensation: -30mV/°C/Cell
Cycle use voltage	Discharge: -15°C ~ 50°C Charge: 0°C ~ 40°C Storage: -15°C ~ 40°C
Operating temp. range	25°C ± 3°C
Nominal operating temp. range	Can be stored for up to 6 months at 25°C and then recharging is recommended. Monthly self-discharge ratio is less than 3% at 25°C
Self discharge	40°C 103% 25°C 100% 0°C 86%
Capacity affected by temp.	A.B.S. UL94-HB UL94-V0 optional
Container material	

APPROVALS

ISO9001 - Quality management system
 ISO14001 - Environmental management System
 Approved for transport by Air (IATA)
 Designed in accordance with IEC 60896-21/22

APPLICATIONS



Renewable energy



Leisure & marine

FPC12-120

Datasheet



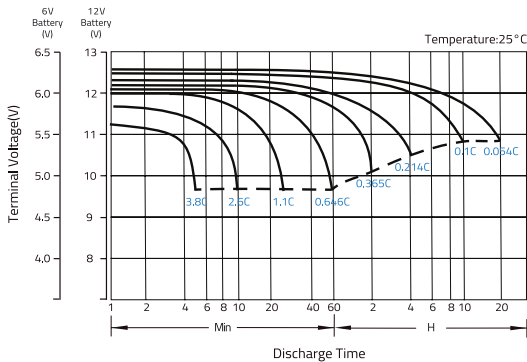
CONSTANT CURRENT DISCHARGE (A) @25°C

F.V/Time	1h	2h	3h	4h	5h	6h	8h	10h	20h
1.85V/cell	66.6	37.1	30.0	23.3	19.8	17.2	13.9	11.7	6.14
1.80V/cell	71.0	39.0	31.4	24.2	20.5	17.7	14.1	12.0	6.30
1.75V/cell	74.0	40.4	32.6	25.0	21.1	18.0	14.2	12.1	6.35
1.70V/cell	76.0	41.7	33.3	25.6	21.6	18.4	14.5	12.2	6.41

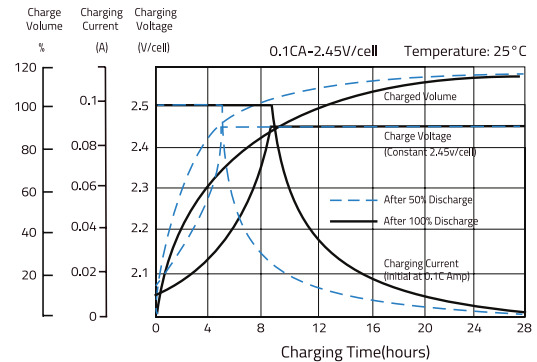
CONSTANT POWER DISCHARGE (W/CELL) @25°C

F.V/Time	1h	2h	3h	4h	5h	6h	8h	10h	20h
1.85V/cell	142.3	72.5	60.7	45.8	38.9	33.7	27.1	23.2	12.2
1.80V/cell	150.6	75.9	63.3	47.3	40.3	34.7	27.6	23.7	12.4
1.75V/cell	155.9	78.1	65.3	48.8	41.3	35.3	27.8	23.9	12.5
1.70V/cell	159.1	80.2	66.4	49.7	42.1	35.9	28.2	24.0	12.6

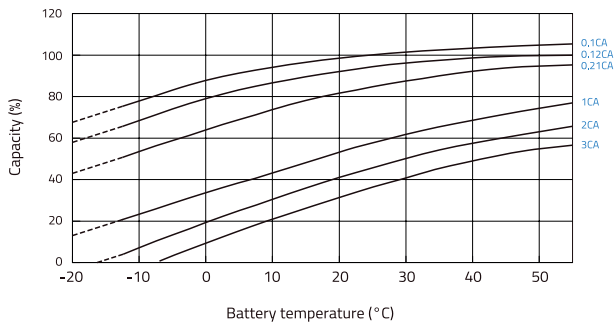
DISCHARGE CHARACTERISTICS



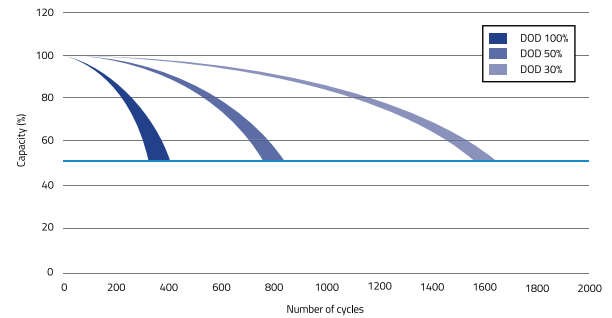
FLOAT CHARGING CHARACTERISTICS



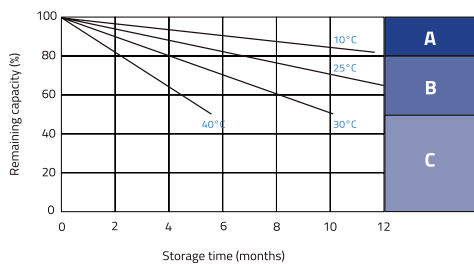
TEMPERATURE IN RELATION TO BATTERY CAPACITY



CYCLE LIFE IN RELATION TO DEPTH OF DISCHARGE



SELF DISCHARGE CHARACTERISTICS



A No supplementary charge required
(Carry out supplementary charge before use if 100% capacity is required.)

Supplementary charge required before use. Optional charging way as below:

- B**
- Charged for above 3 days at limited current 0.25CA and constant voltage 2.25V/cell.
 - Charged for above 20 hours at limited current 0.25CA and constant voltage 2.45V/cell.
 - Charged for 8-10 hours at limited current 0.05CA.

C Supplementary charge may often fail to recover the capacity.
The battery should never be left standing till this is reached.