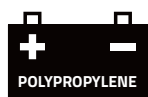


FDC-L16

Datasheet

FULBAT[®]

DEEP CYCLE BATTERY



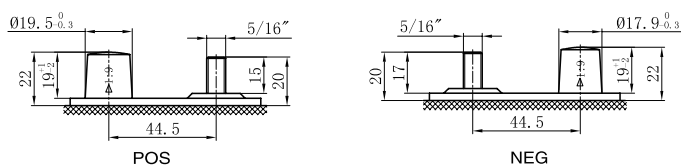
FLOODED

FDC Series are Deep Cycle liquid electrolyte batteries specifically designed for small traction applications (requiring deep discharges). With robust design made of thick positive & negative grid plates in a special alloy, the FDC Series offer low self-discharge and ensure a long service life with high resistance to cycles. This range is ideal for golf cart applications, aerial work platform, cleaning machine, solar.

FEATURES

- Good deep discharge resilience performance
- Low self-discharge
- Low maintenance
- Polypropylene case material = Shock-resistant and acid-resistant
- Terminals with special lead alloy designed for high vibration resistance
- Reinforced grid plates for optimal cyclic use
- Negative plate: 99.9% pure lead with hard paste feature, specific additives for deep cycle purpose
- Very good charging efficiency
- Lower water consumption and reduced thermal runaway possibilities
- Good performance under critical ambient temperature conditions

TERMINAL



SPECIFICATIONS

Voltage	Capacity	Reserve capacity
6V	420Ah (20hr)	850min (25A)
	344Ah (5hr)	220min (75A)

OPERATING TEMPERATURE

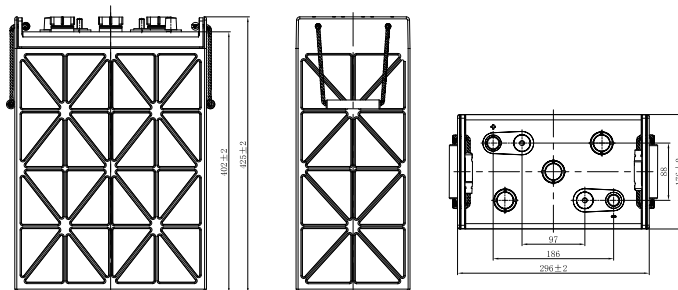
Discharge	20°C ~ 55°C
Charge	0°C ~ 40°C
Storage	-15°C ~ 40°C

CAPACITY AFFECT BY TEMPERATURE

40°C	105%
30°C	100%
0°C	80%

DIMENSIONS & WEIGHT

Length	296±2mm
Width	176±2mm
Total height	425±2mm
Gross weight	52.0kg
Electrolyte	11.2L



APPLICATIONS



Aerial work platform



Golf cart

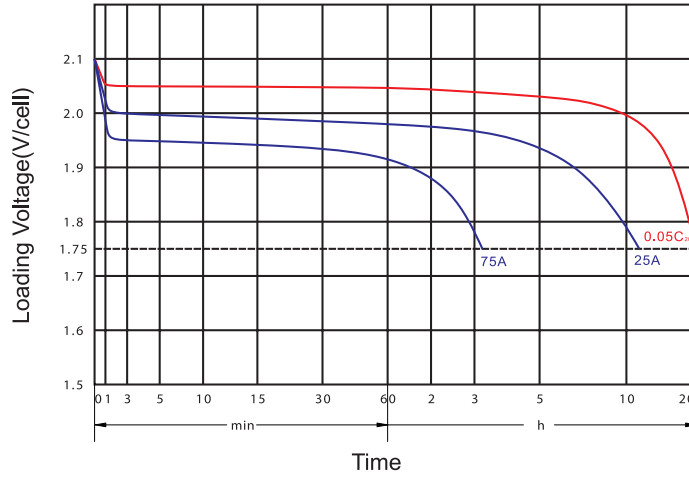


Floor cleaning machine

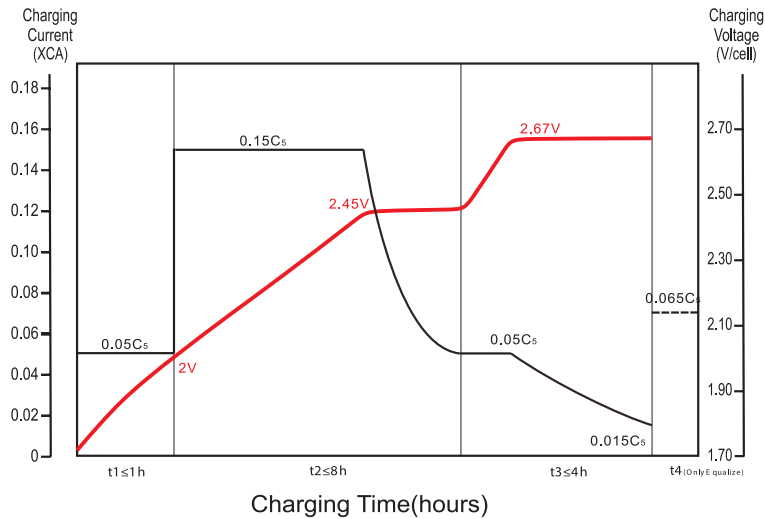


Solar

DISCHARGE CHARACTERISTICS



CHARGING CHARACTERISTICS



CYCLE LIFE IN RELATION TO DEPTH OF DISCHARGE

