

# HIGH CYCLIC LiFePO4 RANGE

High performance & light weight

FLP Series are Lithium Iron Phosphate (LiFePO4) batteries specially designed to replace lead acid batteries thanks to their standard size cases and their similar charging voltage.

The FLP Series offer many advantages compared to lead acid in terms of weight, cyclic performance, safety and power.

## GENERAL INFORMATIONS

- Use: cyclic use
- Technology: Lithium Iron Phosphate (LiFePO4)
- Available voltages: 6V - 12V
- Capacities from 6Ah to 200Ah
- Cycle life:
  - Up to 2000 cycles at 100% DOD\* (50% capacity @20°C)
  - Up to 4000 cycles at 80% DOD\* (50% capacity @20°C)
- Case material: ABS UL94-HB

\*Depth Of Discharge

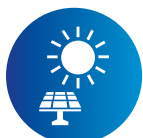


## FEATURES

- High cyclic performances: x10 compared to AGM standard batteries
- Lighter weight: 60% lighter than lead acid battery
- Very high recovery from deep discharge – up to 100% DOD (vs 50% to 80% for AGM)
- Very high charge and discharge current accepted (to 10 times faster than lead acid batteries)
- Protection circuit integrated (PCM): overcharge protection, overdischarge protection, temperature protection & balancing function
- Wide range of operating temperatures: from -20°C to +60°C
- Safety: non-spillable, no acid in the battery, no risk of explosion, no gas emission
- Operation in any orientation
- PSOC: Partial State Of Charge accepted
- Low self-discharge rate (about 3% per month at 20°C)
- Can be charged with a standard lead acid charger (without desulphation step)
- Power and volume ratio yielding unrivalled energy density

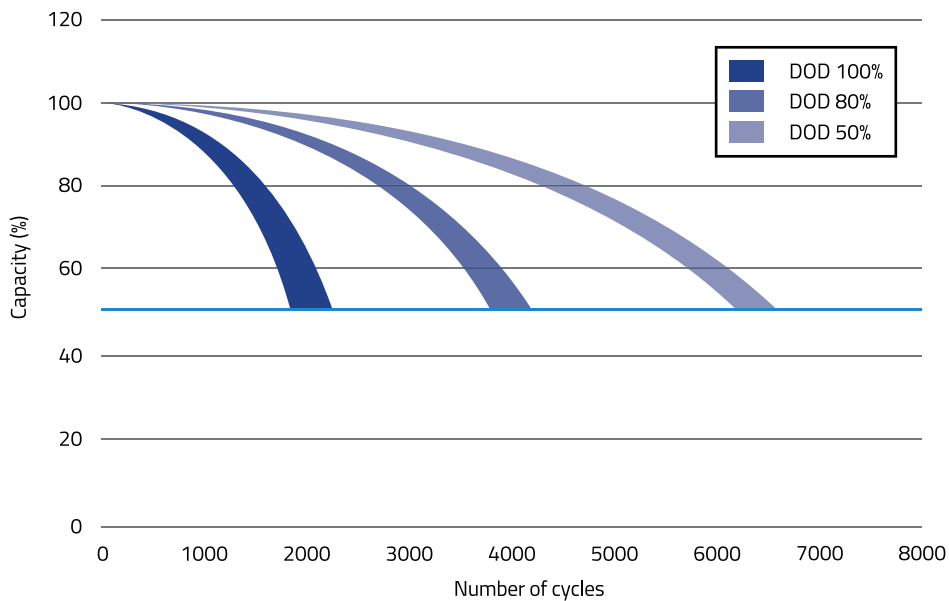


## APPLICATIONS



Designation	P/N	Voltage (V)	Capacity Ah (5Hr)	Dimensions mm (±2mm)				Polarity	Terminals*
				L	W	H	Total height		
FLP6-6	592501	6.4	6	70	47	101	105		T2
FLP12-9	592502	12.8	9	151	65	94	99		T2
FLP12-12	592503	12.8	12	151	98	95	100		T2
FLP12-24	592511	12.8	24	181	77	167	167		T12
FLP12-36	592505	12.8	36	195	130	162	162		T6
FLP12-40	592506	12.8	40	195	165	175	175		T6
FLP12-65	592507	12.8	60	229	138	217	217		T6
FLP12-84	592515	12.8	84	260	169	213	218		T11
FLP12-100	592508	12.8	100	326	171.7	212	212		T11
FLP12-100B	592512	12.8	100	353	175	190	190		Auto
FLP12-150	592509	12.8	150	483	170	238	238		T11
FLP12-200	592510	12.8	200	521	233	220	220		T11

## CYCLE LIFE



Fulbat LiFePo4 Battery Monitor



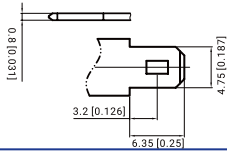
\*Terminals p.14

# TERMINALS & LAYOUTS RANGE

## TERMINALS DETAILS

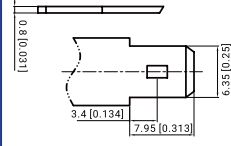
### T1 terminal

Faston type (copper) quick disconnect tabs, silver coating for better conductivity



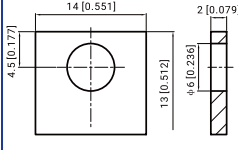
### T2 terminal

Faston type (copper) quick disconnect tabs, silver coating for better conductivity



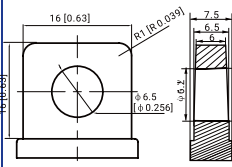
### T3 terminal

Brass coated with tin



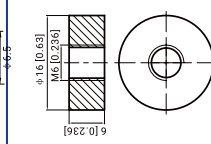
### T5 terminal

Lead



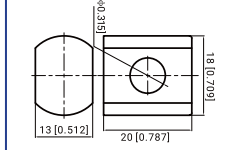
### T6 terminal

Copper, Threaded Insert 6mm stud



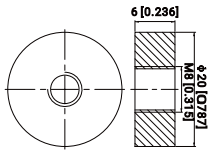
### T9 terminal

Lead



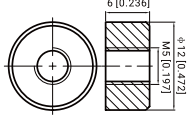
### T11 terminal

Copper, threaded Insert 8mm stud



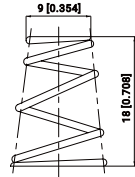
### T12 terminal

Copper, threaded insert 5mm stud



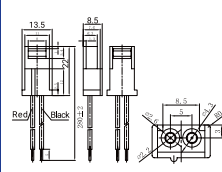
### Spring terminal

Spring steel, fully collapsible



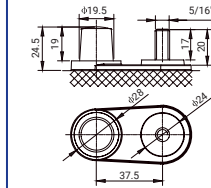
### JST

Toy battery connector H-Connector



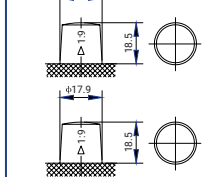
### DUAL

Bolt terminal



### AUTO

Lead



Bolts are included for each battery

(in mm)

## 3D TERMINALS

### T1 terminal



### T2 terminal



### T3 terminal



### T5 terminal



### T6 terminal



### T9 terminal



### T11 terminal



### T12 terminal



### T13 terminal



### JST



### DUAL



### AUTO



## ACCESSORIES



T11 to automotive adapter



T6 to automotive adapter



T1 to T2 adapter

# MAIN BATTERIES BY APPLICATION

SECURITY											
Designation	P/N	Technology	Voltage (V)	Capacity Ah (20Hr)	Capacity Ah (10Hr)	Dimensions mm (±2mm)				Polarity	Terminals*
						L	W	H	Total height		
FP12-1.2	590015	AGM	12	1.2	1.1	97	43	52	58		T1
FP12-2.3	590018	AGM	12	2.3	2.1	178	35	60	66		T1
FP12-3.2	590022	AGM	12	3.2	3.0	134	67	59.5	65.5		T1
FP12-7.2	590028	AGM	12	7.2	6.7	151	65	93.5	99.5		T1
FP12-12	590033	AGM	12	12	11.2	151	98	95	101		T2
FP12-18	590035	AGM	12	18	16.7	181.5	76.5	167.5	167.5		T12

UPS											
Designation	P/N	Technology	Voltage (V)	Capacity Ah (20Hr)	Capacity Ah (10Hr)	Dimensions mm (±2mm)				Polarity	Terminals*
						L	W	H	Total height		
FP6-7.2	590028	AGM	6	7.2	6.7	150	34	94	100		T1
FP12-5.4	590025	AGM	12	5.4	5.0	90	70	101	107		T2
FP12-5.5	590027	AGM	12	5.5	4.7	151	53	93	99		T2 + T1
FP12-9	590031	AGM	12	9	8.3	151	65	93.5	99.5		T2
FP12-18	590035	AGM	12	18	16.7	181.5	76.5	167.5	167.5		T12

MEDICAL											
Designation	P/N	Technology	Voltage (V)	Capacity Ah (20Hr)	Capacity Ah (10Hr)	Dimensions mm (±2mm)				Polarity	Terminals*
						L	W	H	Total height		
FP6-1.2	590002	AGM	6	1.2	1.1	97	24	51.5	57.5		T1
FP6-3.2	590004	AGM	6	3.2	3.0	134	34	60	66		T1
FP6-4.5	590006	AGM	6	4.5	4.2	70	47	100	106		T1
FP6-10	590011	AGM	6	10	9.3	151	50.5	94	100		T1
FP12-1.2	590015	AGM	12	1.2	1.1	97	43	52	58		T1
FP12-2.3	590018	AGM	12	2.3	2.1	178	35	60	66		T1
FP12-3.2	590022	AGM	12	3.2	3.0	134	67	59.5	65.5		T1
FP12-7.2	590028	AGM	12	7.2	6.7	151	65	93.5	99.5		T1
FP12-18	590035	AGM	12	18	16.7	181.5	76.5	167.5	167.5		T12

MOBILITY											
Designation	P/N	Technology	Voltage (V)	Capacity Ah (20Hr)	Capacity Ah (10Hr)	Dimensions mm (±2mm)				Polarity	Terminals*
						L	W	H	Total height		
FPC12-13	590504	AGM	12	13.9	13	151	98	95	101		T2
FPC12-20	590505	AGM	12	20	18	181.5	76.5	167.5	167.5		T12
FPC12-26	590506	AGM	12	26	24.2	165	176	125	125		T12
FPC12-35	590508	AGM	12	35.4	33	195	130	164	182		T5
FPC12-40	590509	AGM	12	40.8	38	197	165	170	170		T12/T6
FPG12-31	591508	GEL	12	31	27.6	195	130	164	178		T5
FPG12-40	591509	GEL	12	40	35	197	165	170	170		T6
FPG12-50	591510	GEL	12	50	46.5	229	138	205	211		T6
FPG12-70	591517	GEL	12	70	64.6	260	168	208	230		T6
FLP12-12	592503	LiFePO4	12.8	-	12 (5Hrs)	151	98	95	100		T2
FLP12-36	592505	LiFePO4	12.8	-	36 (5Hrs)	195	130	162	162		T6
FLP12-40	592506	LiFePO4	12.8	-	40 (5Hrs)	195	165	175	175		T6

GOLF CADDY											
Designation	P/N	Technology	Voltage (V)	Capacity Ah (20Hr)	Capacity Ah (10Hr)	Dimensions mm (±2mm)				Polarity	Terminals*
						L	W	H	Total height		
FPC12-20	590505	AGM	12	20	18	181.5	76.5	167.5	167.5		T12
FPC12-26	590506	AGM	12	26	24.2	165	176	125	125		T12
FPC12-35	590508	AGM	12	35.4	33	195	130	164	182		T5
FPG12-26	591506	GEL	12	26	24.2	166	175	125	125		T12
FPG12-31	591508	GEL	12	31	27.6	195	130	164	178		T5
FLP12-36	592505	LiFePO4	12.8	-	36 (5Hrs)	195	130	162	162		T6

\*Terminals p.16