

GENERAL PURPOSE AGM RANGE

Maintenance free & reliable

FP Series are general purpose batteries with 5 years design life in float service (8 years from 40Ah). With advanced AGM valve regulated technology and high purity raw material, the FP series batteries ensure high performance and reliable standby service life.

GENERAL INFORMATIONS

- ↗ Use: standby / light cyclic use
- ↗ Technology: AGM (VRLA)
- ↗ Available voltages: 4V - 6V - 12V
- ↗ Capacities from 0.8Ah to 250Ah
- ↗ Design life at 20°C ambient temperature:
 - 5 years up to 33Ah
 - 10 years from 40Ah
- ↗ Case material: ABS UL94-HB / FR version (UL94-V0) in option*



NON-SPILLABLE

FEATURES

- ↗ Maintenance free & non-spillable
- ↗ AGM (Absorbent Glass Mat) technology assures no free electrolyte
- ↗ Low self-discharge rate (about 3% per month at 20°C)
- ↗ Lead calcium grids for superior life
- ↗ Operate in any orientation (excluding continuous inverted use)
- ↗ Wide range of operating temperatures
- ↗ Rugged impact resistance ABS case
- ↗ Low gas emission due to high gas recombination of 99% (VRLA)

APPLICATIONS



*compliant with fire standard EN 60950-1 on flammability and fire resistance.

Designation	P/N	Voltage (V)	Capacity Ah (20Hr)	Capacity Ah (10Hr)	Dimensions mm (±2mm)				Polarity	Terminal*
					L	W	H	Total height		
FP4-3.5	590001	4	3.5	3.3	90	34	59	65		T1
FP6-1.2	590002	6	1.2	1.1	97	24	51.5	57.5		T1
FP6-2.8	590003	6	2.8	2.6	66	33	97	103		T1
FP6-3.2	590004	6	3.2	3	134	34	60	66		T1
FP6-4	590005	6	4	3.7	70	47	100	106		T1
FP6-4.5	590006	6	4.5	4.2	70	47	100	106		T1
FP6-6	590007	6	6	5.6	70	47	100	106		T1
FP6-4.5S	590008	6	4.5	4.2	67	67	96	109	-	S
FP6-5	590009	6	5	4.7	169.5	34.5	70	74		T1
FP6-7.2	590010	6	7.2	6.7	150	34	94	100		T1
FP6-10	590011	6	10	9.3	151	50.5	94	100		T1
FP6-12	590012	6	12	11.2	151	50.5	94	100		T2
FP12-0.8	590014	12	0.8	0.8	96	25	62	62		JST
FP12-0.8FR (1)	590059	12	0.8	0.8	96	25	62	62		JST
FP12-1.2	590015	12	1.2	1.1	97	43	52	58		T1
FP12-1.2FR (1)	590060	12	1.2	1.1	97	43	52	58		T1
FP12-2.2	590017	12	2.2	2.1	70.5	47.5	97	103		T1
FP12-2.3	590018	12	2.3	2.1	178	35	60	66		T1
FP12-2.3FR (1)	590061	12	2.3	2.1	178	35	60	66		T1
FP12-2.3C	590019	12	2.3	2.1	182	24	61	61	-	Contacts
FP12-2.6	590020	12	2.6	2.3	178	35	60	66		T1
FP12-2.9	590021	12	2.9	2.7	79	56	99	105		T1
FP12-3.2	590022	12	3.2	3	134	67	59.5	65.5		T1
FP12-4L	590023	12	4	3.7	195	47	70	76		T1
FP12-4.5	590071	12	4.5	4.2	90	70	101	107		T1
FP12-4.5FR (1)	590024	12	4.5	4.2	90	70	101	107		T1
FP12-5.4	590025	12	5.4	5	90	70	101	107		T2
FP12-5	590026	12	5.4	4.7	151	53	93	99		T1
FP12-5.5	590027	12	5.5	4.7	151	53	93	99		T2 + T1
FP12-7.2	590028	12	7.2	6.7	151	65	93.5	99.5		T1
FP12-7.2FR (1)	590062	12	7.2	6.7	151	65	93.5	99.5		T1
FP12-9	590031	12	9	8.3	151	65	93.5	99.5		T2
FP12-10H	590032	12	10	9.3	151	65	111	117		T2
FP12-12	590033	12	12	11.2	151	98	95	101		T2
FP12-12FR (1)	590063	12	12	11.2	151	98	95	101		T2
FP12-18	590035	12	18	16.7	181.5	76.5	167.5	167.5		T12
FP12-18FR (1)	590064	12	18	16.7	181.5	76.5	167.5	167.5		T12
FP12-20	590037	12	20	18.6	181.5	77	167.5	167.5		T12
FP12-24	590038	12	24	22.3	167	175	125	125		T12
FP12-24FR (1)	590065	12	24	22.3	167	175	125	125		T12
FP12-33	590042	12	33	30.7	195	130	164	178		T6
FP12-40	590043	12	40	38	197	165	170	170		T6
FP12-40FR (1)	590066	12	40	38	197	165	170	170		T6
FP12-50	590044	12	50	48	197	165	170	170		T6
FP12-55	590045	12	55	52	257	132	200	200		T6
FP12-60	590046	12	60	56	229	138	205	211		T6
FP12-65	590047	12	65	62.1	348	167	178	178		T6
FP12-65FR (1)	590069	12	65	62.1	348	167	178	178		T6
FP12-75	590050	12	75	73	348	167	178	178		T6
FP12-80	590051	12	80	78	260	168	208	214		T6
FP12-100	590053	12	104	100	330	173	212	220		T11

(1) Conformed to UL94-V0 (Flame retardant)

*Terminals p.16

FRONT TERMINAL AGM RANGE

Easy to install & maintain

FFT batteries are designed for applications that demand high levels of reliability and safety, FFT batteries offer a long service life up to 12 years. Thanks to their front terminal design, these batteries allow rapid installation and easy access for maintenance.

GENERAL INFORMATIONS

- Use: standby
- Technology: AGM (VRLA)
- Available voltage: 12V
- Capacities from 100Ah to 190Ah
- 12 years design life at 25°C ambient temperature
- Case material: ABS UL94-HB / FR version (UL94-V0) in option*



NON-SPILLABLE

FEATURES

- Front access to terminals
- Installation, maintenance and supervision easy
- Ideal for 48V system
- Ideal for 19" or 23" racks or site cabinets
- Maintenance free & non-spillable
- AGM (Absorbent Glass Mat) technology assures no free electrolyte
- Low self-discharge rate (about 3%/month at 20 °C)
- Wide range of operating temperatures
- Low gas emission due to high gas recombination of 99% (VRLA)

APPLICATIONS



Designation	P/N	Voltage (V)	Capacity Ah (20Hr)	Capacity Ah (10Hr)	Dimensions mm (±2mm)				Polarity	Terminal*
					L	W	H	Total height		
FFT12-100	590067	12	106	100	508	110	238.5	238.5		T6
FFT12-150	590068	12	157.6	150	551	110	288	288		T6

*compliant with fire standard EN 60950-1 on flammability and fire resistance.

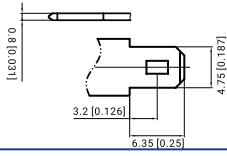
*Terminals p.16

TERMINALS & LAYOUTS RANGE

TERMINALS DETAILS

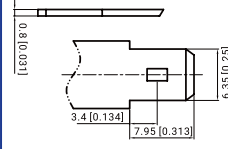
T1 terminal

Faston type (copper) quick disconnect tabs, silver coating for better conductivity



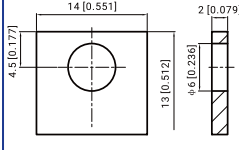
T2 terminal

Faston type (copper) quick disconnect tabs, silver coating for better conductivity



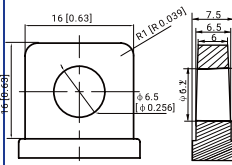
T3 terminal

Brass coated with tin



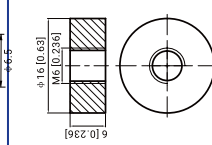
T5 terminal

Lead



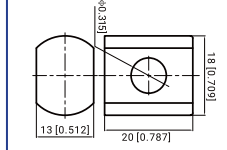
T6 terminal

Copper, Threaded Insert 6mm stud



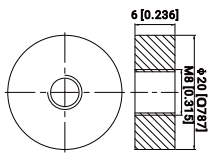
T9 terminal

Lead



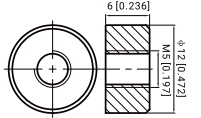
T11 terminal

Copper, threaded Insert 8mm stud



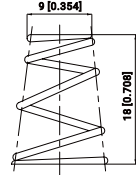
T12 terminal

Copper, threaded insert 5mm stud



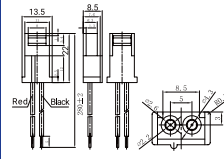
Spring terminal

Spring steel, fully collapsible



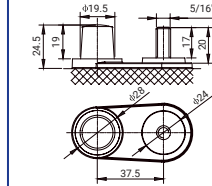
JST

Toy battery connector H-Connector



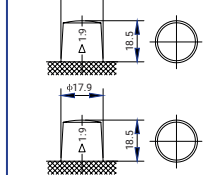
DUAL

Bolt terminal



AUTO

Lead



Bolts are included for each battery

(in mm)

3D TERMINALS

T1 terminal



T2 terminal



T3 terminal



T5 terminal



T6 terminal



T9 terminal



T11 terminal



T12 terminal



T13 terminal



JST



DUAL



AUTO



ACCESSORIES



T11 to automotive adapter



T6 to automotive adapter



T1 to T2 adapter

MAIN BATTERIES BY APPLICATION

SECURITY											
Designation	P/N	Technology	Voltage (V)	Capacity Ah (20Hr)	Capacity Ah (10Hr)	Dimensions mm (±2mm)				Polarity	Terminals*
						L	W	H	Total height		
FP12-1.2	590015	AGM	12	1.2	1.1	97	43	52	58		T1
FP12-2.3	590018	AGM	12	2.3	2.1	178	35	60	66		T1
FP12-3.2	590022	AGM	12	3.2	3.0	134	67	59.5	65.5		T1
FP12-7.2	590028	AGM	12	7.2	6.7	151	65	93.5	99.5		T1
FP12-12	590033	AGM	12	12	11.2	151	98	95	101		T2
FP12-18	590035	AGM	12	18	16.7	181.5	76.5	167.5	167.5		T12

UPS											
Designation	P/N	Technology	Voltage (V)	Capacity Ah (20Hr)	Capacity Ah (10Hr)	Dimensions mm (±2mm)				Polarity	Terminals*
						L	W	H	Total height		
FP6-7.2	590028	AGM	6	7.2	6.7	150	34	94	100		T1
FP12-5.4	590025	AGM	12	5.4	5.0	90	70	101	107		T2
FP12-5.5	590027	AGM	12	5.5	4.7	151	53	93	99		T2 + T1
FP12-9	590031	AGM	12	9	8.3	151	65	93.5	99.5		T2
FP12-18	590035	AGM	12	18	16.7	181.5	76.5	167.5	167.5		T12

MEDICAL											
Designation	P/N	Technology	Voltage (V)	Capacity Ah (20Hr)	Capacity Ah (10Hr)	Dimensions mm (±2mm)				Polarity	Terminals*
						L	W	H	Total height		
FP6-1.2	590002	AGM	6	1.2	1.1	97	24	51.5	57.5		T1
FP6-3.2	590004	AGM	6	3.2	3.0	134	34	60	66		T1
FP6-4.5	590006	AGM	6	4.5	4.2	70	47	100	106		T1
FP6-10	590011	AGM	6	10	9.3	151	50.5	94	100		T1
FP12-1.2	590015	AGM	12	1.2	1.1	97	43	52	58		T1
FP12-2.3	590018	AGM	12	2.3	2.1	178	35	60	66		T1
FP12-3.2	590022	AGM	12	3.2	3.0	134	67	59.5	65.5		T1
FP12-7.2	590028	AGM	12	7.2	6.7	151	65	93.5	99.5		T1
FP12-18	590035	AGM	12	18	16.7	181.5	76.5	167.5	167.5		T12

MOBILITY											
Designation	P/N	Technology	Voltage (V)	Capacity Ah (20Hr)	Capacity Ah (10Hr)	Dimensions mm (±2mm)				Polarity	Terminals*
						L	W	H	Total height		
FPC12-13	590504	AGM	12	13.9	13	151	98	95	101		T2
FPC12-20	590505	AGM	12	20	18	181.5	76.5	167.5	167.5		T12
FPC12-26	590506	AGM	12	26	24.2	165	176	125	125		T12
FPC12-35	590508	AGM	12	35.4	33	195	130	164	182		T5
FPC12-40	590509	AGM	12	40.8	38	197	165	170	170		T12/T6
FPG12-31	591508	GEL	12	31	27.6	195	130	164	178		T5
FPG12-40	591509	GEL	12	40	35	197	165	170	170		T6
FPG12-50	591510	GEL	12	50	46.5	229	138	205	211		T6
FPG12-70	591517	GEL	12	70	64.6	260	168	208	230		T6
FLP12-12	592503	LiFePO4	12.8	-	12 (5Hrs)	151	98	95	100		T2
FLP12-36	592505	LiFePO4	12.8	-	36 (5Hrs)	195	130	162	162		T6
FLP12-40	592506	LiFePO4	12.8	-	40 (5Hrs)	195	165	175	175		T6

GOLF CADDY											
Designation	P/N	Technology	Voltage (V)	Capacity Ah (20Hr)	Capacity Ah (10Hr)	Dimensions mm (±2mm)				Polarity	Terminals*
						L	W	H	Total height		
FPC12-20	590505	AGM	12	20	18	181.5	76.5	167.5	167.5		T12
FPC12-26	590506	AGM	12	26	24.2	165	176	125	125		T12
FPC12-35	590508	AGM	12	35.4	33	195	130	164	182		T5
FPG12-26	591506	GEL	12	26	24.2	166	175	125	125		T12
FPG12-31	591508	GEL	12	31	27.6	195	130	164	178		T5
FLP12-36	592505	LiFePO4	12.8	-	36 (5Hrs)	195	130	162	162		T6

*Terminals p.16