

CYCLIC AGM RANGE

Robust & long cycle life

FPC Series are deep cycle batteries specially designed for long duration cyclic applications (where the battery is frequently charged and discharged). With advanced AGM valve regulated technology and oversized negative plates, the FPC Series ensure very good cyclic performance with greater depth of discharge for mobility-type applications such as medical, golf and also renewable energies storage.

GENERAL INFORMATIONS

- ↗ Use: cyclic use
- ↗ Technology: AGM (VRLA)
- ↗ Available voltages: 6V - 12V
- ↗ Capacities from 8Ah to 200Ah
- ↗ Cycle life:
 - Up to 350 cycles at 100% DOD* (50% capacity @20°C)
 - Up to 800 cycles at 50% DOD* (50% capacity @20°C)
- ↗ Case material: ABS UL94-HB

*Depth Of Discharge

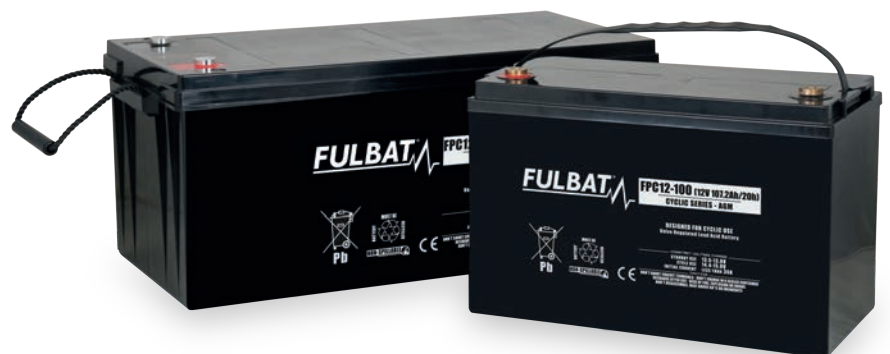


NON-SPILLABLE



FEATURES

- ↗ Maintenance free & non-spillable
- ↗ High cyclic performances: x2 compared to AGM standard batteries
- ↗ Over dimensioned negative plate & enhanced conception for longer cycle life
- ↗ Good recovery from deep discharge
- ↗ Lead calcium grids for superior life
- ↗ Lower internal resistance for higher current discharge
- ↗ Low self-discharge rate (about 3% per month at 20°C)
- ↗ Wide range operating temperatures
- ↗ Operation in any orientation (excluding continuous inverted use)
- ↗ Robust construction: strong resistance to vibrations
- ↗ Low gas emission due to high gas recombination of 99% (VRLA)

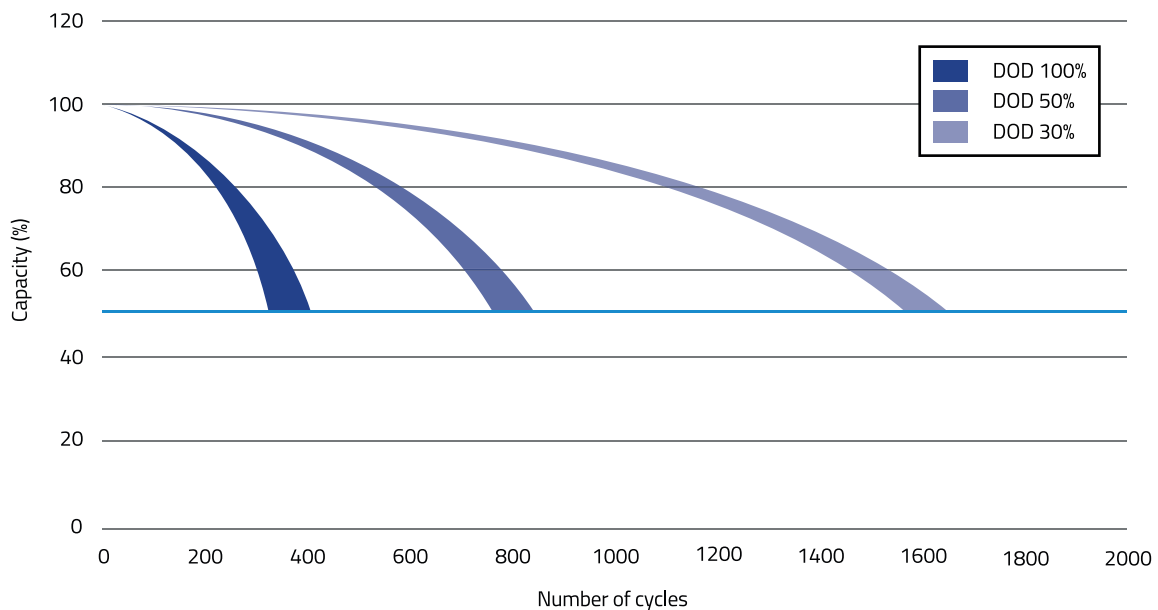


APPLICATIONS



Designation	P/N	Voltage (V)	Capacity Ah (20Hr)	Capacity Ah (10Hr)	Dimensions mm (±2mm)				Polarity	Terminal*
					L	W	H	Total height		
FPC6-13	590501	6	13.9	13	151	50.5	94	100		T2
FPC12-8	590502	12	8	7.2	151	65	93.5	99.5		T2
FPC12-13	590504	12	13.9	13	151	98	95	101		T2
FPC12-20	590505	12	20	18	181.5	76.5	167.5	167.5		T12
FPC12-26	590506	12	26	24.2	165	176	125	125		T12
FPC12-28	590507	12	28	26	166	175	125	125		T12
FPC12-35	590508	12	35.4	33	195	130	164	182		T6
FPC12-40	590509	12	40.8	38	197	165	170	170		T6
FPC12-60	590510	12	60	56	229	138	210	210		T6
FPC12-80	590511	12	80.4	75	260	168	208	214		T6
FPC12-100	590512	12	107.2	100	330	173	212	220		T11
FPC12-120	590513	12	128.6	120	408	177	225	225		T11
FPC12-160	590514	12	160.8	150	483	170	238.5	238.5		T11
FPC12-200	590515	12	214.4	200	522	240	218	224		T11

CYCLE LIFE



PACKAGING

Are delivered in color box:

- FPC12-13
- FPC12-20
- FPC12-26
- FPC12-35



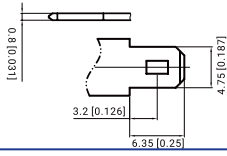
*Terminals p.16

TERMINALS & LAYOUTS RANGE

TERMINALS DETAILS

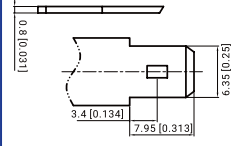
T1 terminal

Faston type (copper) quick disconnect tabs, silver coating for better conductivity



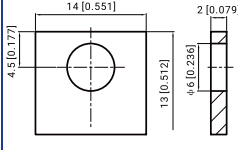
T2 terminal

Faston type (copper) quick disconnect tabs, silver coating for better conductivity



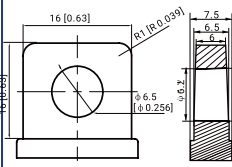
T3 terminal

Brass coated with tin



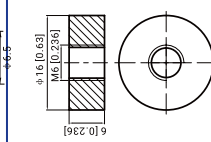
T5 terminal

Lead



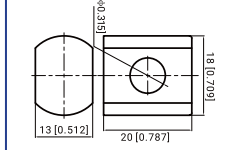
T6 terminal

Copper, Threaded Insert 6mm stud



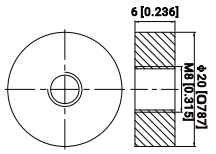
T9 terminal

Lead



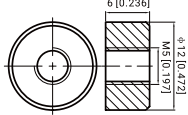
T11 terminal

Copper, threaded Insert 8mm stud



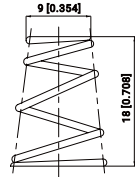
T12 terminal

Copper, threaded insert 5mm stud



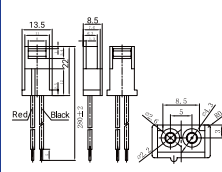
Spring terminal

Spring steel, fully collapsible



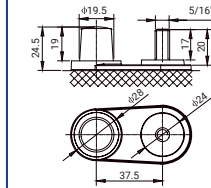
JST

Toy battery connector H-Connector



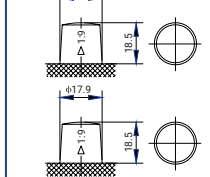
DUAL

Bolt terminal



AUTO

Lead



Bolts are included for each battery

(in mm)

3D TERMINALS

T1 terminal



T2 terminal



T3 terminal



T5 terminal



T6 terminal



T9 terminal



T11 terminal



T12 terminal



T13 terminal



JST



DUAL



AUTO



ACCESSORIES



T11 to automotive adapter



T6 to automotive adapter



T1 to T2 adapter