

CYCLIC GEL RANGE

Ideal in harsh conditions

FPG Series are deep cycle batteries specially designed for long duration cyclic applications (where the battery is frequently charged and discharged), ie with use in charge and then intensive discharge. With innovative GEL valve regulated technology and special plate design, the FPG Series ensure higher cyclic performance and higher recovery capability after deep discharge than cyclic AGM batteries.

GENERAL INFORMATIONS

- ↗ Use: cyclic use
- ↗ Technology: GEL (VRLA)
- ↗ Available voltage: 12V
- ↗ Capacities from 26Ah to 200Ah
- ↗ Cycle life:
 - Up to 550 cycles at 100% DOD* (50% capacity @20°C)
 - Up to 1100 cycles at 50% DOD* (50% capacity @20°C)
- ↗ Case material: ABS UL94-HB

*Depth Of Discharge



NON-SPILLABLE

CYCLE LIFE
UP TO
1100

FEATURES

- ↗ Maintenance free & non-spillable
- ↗ High cyclic performances: x3 compared to AGM standard batteries
- ↗ High recovery from deep discharge
- ↗ Very low self-discharge rate (about 2% per month at 20°C)
- ↗ Wide range of operating temperatures - superior to AGM
- ↗ Higher operating temperature & depth of discharge: ideal in harsh conditions
- ↗ Operation in any orientation (excluding continuous inverted use)
- ↗ Rugged impact resistance
- ↗ No electrolyte stratification phenomenon
- ↗ Low gas emission due to high gas recombination of 99% (VRLA)

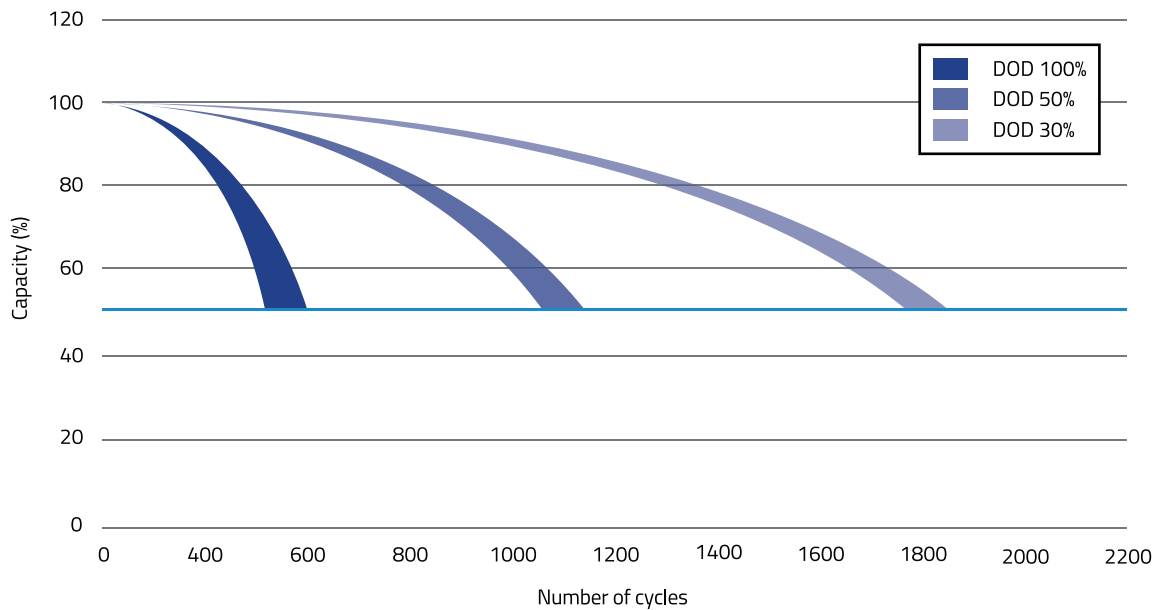


APPLICATIONS



| Designation | P/N | Voltage (V) | Capacity Ah (20Hr) | Capacity Ah (10Hr) | Dimensions mm (±2mm) | | | | Polarity | Terminals* |
|---------------|--------|-------------|--------------------|--------------------|----------------------|-----|-------|--------------|----------|------------|
| | | | | | L | W | H | Total height | | |
| FPG12-26 | 591506 | 12 | 26 | 24.2 | 166 | 175 | 125 | 125 | | T12 |
| FPG12-31 | 591508 | 12 | 31 | 27.6 | 195 | 130 | 164 | 178 | | T6 |
| FPG12-40 | 591509 | 12 | 40 | 35 | 197 | 165 | 170 | 170 | | T6 |
| FPG12-50 | 591510 | 12 | 50 | 46.5 | 229 | 138 | 205 | 211 | | T6 |
| FPG12-60 | 591511 | 12 | 60 | 55 | 260 | 168 | 173 | 179 | | T6 |
| FPG12-70 | 591517 | 12 | 70 | 64.6 | 260 | 168 | 208 | 214 | | T6 |
| FPG12-85 | 591518 | 12 | 85 | 80 | 306 | 168 | 208 | 214 | | T6 |
| FPG12-90 (L5) | 591520 | 12 | 90 | 84 | 353 | 175 | 190 | 190 | | Auto |
| FPG12-100 | 591512 | 12 | 100 | 90 | 330 | 173 | 212 | 218 | | T11 |
| FPG12-130 | 591519 | 12 | 130 | 125 | 345 | 172 | 274 | 280 | | T11 |
| FPG12-140 | 591514 | 12 | 140 | 135 | 483 | 170 | 238.5 | 238.5 | | T11 |
| FPG12-200 | 591515 | 12 | 200 | 190 | 522 | 240 | 218 | 224 | | T11 |
| FPG12-250 | 591516 | 12 | 258 | 250 | 522 | 268 | 220 | 226 | | T11 |

CYCLE LIFE



PACKAGING

Are delivered in color box:

- FPG12-26
- FPG12-31



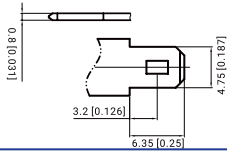
*Terminals p.16

TERMINALS & LAYOUTS RANGE

TERMINALS DETAILS

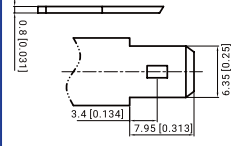
T1 terminal

Faston type (copper) quick disconnect tabs, silver coating for better conductivity



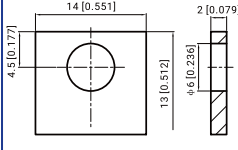
T2 terminal

Faston type (copper) quick disconnect tabs, silver coating for better conductivity



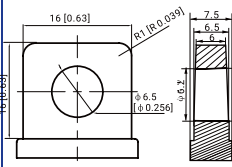
T3 terminal

Brass coated with tin



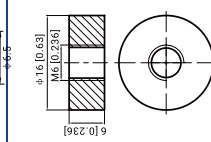
T5 terminal

Lead



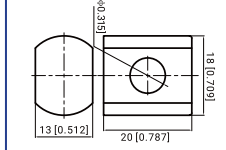
T6 terminal

Copper, Threaded Insert 6mm stud



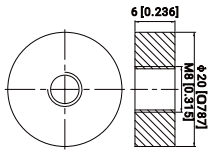
T9 terminal

Lead



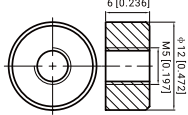
T11 terminal

Copper, threaded Insert 8mm stud



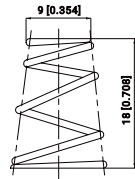
T12 terminal

Copper, threaded insert 5mm stud



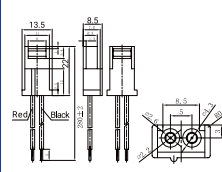
Spring terminal

Spring steel, fully collapsible



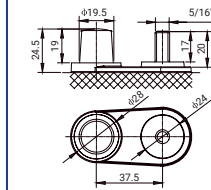
JST

Toy battery connector H-Connector



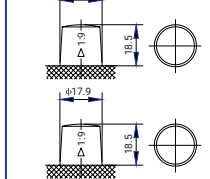
DUAL

Bolt terminal



AUTO

Lead



Bolts are included for each battery

(in mm)

3D TERMINALS

T1 terminal



T2 terminal



T3 terminal



T5 terminal



T6 terminal



T9 terminal



T11 terminal



T12 terminal



T13 terminal



JST



DUAL



AUTO



ACCESSORIES



T11 to automotive adapter



T6 to automotive adapter



T1 to T2 adapter

MAIN BATTERIES BY APPLICATION

| SECURITY | | | | | | | | | | | |
|-------------|--------|------------|-------------|--------------------|--------------------|----------------------|------|-------|--------------|----------|------------|
| Designation | P/N | Technology | Voltage (V) | Capacity Ah (20Hr) | Capacity Ah (10Hr) | Dimensions mm (±2mm) | | | | Polarity | Terminals* |
| | | | | | | L | W | H | Total height | | |
| FP12-1.2 | 590015 | AGM | 12 | 1.2 | 1.1 | 97 | 43 | 52 | 58 | | T1 |
| FP12-2.3 | 590018 | AGM | 12 | 2.3 | 2.1 | 178 | 35 | 60 | 66 | | T1 |
| FP12-3.2 | 590022 | AGM | 12 | 3.2 | 3.0 | 134 | 67 | 59.5 | 65.5 | | T1 |
| FP12-7.2 | 590028 | AGM | 12 | 7.2 | 6.7 | 151 | 65 | 93.5 | 99.5 | | T1 |
| FP12-12 | 590033 | AGM | 12 | 12 | 11.2 | 151 | 98 | 95 | 101 | | T2 |
| FP12-18 | 590035 | AGM | 12 | 18 | 16.7 | 181.5 | 76.5 | 167.5 | 167.5 | | T12 |

| UPS | | | | | | | | | | | |
|-------------|--------|------------|-------------|--------------------|--------------------|----------------------|------|-------|--------------|----------|------------|
| Designation | P/N | Technology | Voltage (V) | Capacity Ah (20Hr) | Capacity Ah (10Hr) | Dimensions mm (±2mm) | | | | Polarity | Terminals* |
| | | | | | | L | W | H | Total height | | |
| FP6-7.2 | 590028 | AGM | 6 | 7.2 | 6.7 | 150 | 34 | 94 | 100 | | T1 |
| FP12-5.4 | 590025 | AGM | 12 | 5.4 | 5.0 | 90 | 70 | 101 | 107 | | T2 |
| FP12-5.5 | 590027 | AGM | 12 | 5.5 | 4.7 | 151 | 53 | 93 | 99 | | T2 + T1 |
| FP12-9 | 590031 | AGM | 12 | 9 | 8.3 | 151 | 65 | 93.5 | 99.5 | | T2 |
| FP12-18 | 590035 | AGM | 12 | 18 | 16.7 | 181.5 | 76.5 | 167.5 | 167.5 | | T12 |

| MEDICAL | | | | | | | | | | | |
|-------------|--------|------------|-------------|--------------------|--------------------|----------------------|------|-------|--------------|----------|------------|
| Designation | P/N | Technology | Voltage (V) | Capacity Ah (20Hr) | Capacity Ah (10Hr) | Dimensions mm (±2mm) | | | | Polarity | Terminals* |
| | | | | | | L | W | H | Total height | | |
| FP6-1.2 | 590002 | AGM | 6 | 1.2 | 1.1 | 97 | 24 | 51.5 | 57.5 | | T1 |
| FP6-3.2 | 590004 | AGM | 6 | 3.2 | 3.0 | 134 | 34 | 60 | 66 | | T1 |
| FP6-4.5 | 590006 | AGM | 6 | 4.5 | 4.2 | 70 | 47 | 100 | 106 | | T1 |
| FP6-10 | 590011 | AGM | 6 | 10 | 9.3 | 151 | 50.5 | 94 | 100 | | T1 |
| FP12-1.2 | 590015 | AGM | 12 | 1.2 | 1.1 | 97 | 43 | 52 | 58 | | T1 |
| FP12-2.3 | 590018 | AGM | 12 | 2.3 | 2.1 | 178 | 35 | 60 | 66 | | T1 |
| FP12-3.2 | 590022 | AGM | 12 | 3.2 | 3.0 | 134 | 67 | 59.5 | 65.5 | | T1 |
| FP12-7.2 | 590028 | AGM | 12 | 7.2 | 6.7 | 151 | 65 | 93.5 | 99.5 | | T1 |
| FP12-18 | 590035 | AGM | 12 | 18 | 16.7 | 181.5 | 76.5 | 167.5 | 167.5 | | T12 |

| MOBILITY | | | | | | | | | | | |
|-------------|--------|------------|-------------|--------------------|--------------------|----------------------|------|-------|--------------|----------|------------|
| Designation | P/N | Technology | Voltage (V) | Capacity Ah (20Hr) | Capacity Ah (10Hr) | Dimensions mm (±2mm) | | | | Polarity | Terminals* |
| | | | | | | L | W | H | Total height | | |
| FPC12-13 | 590504 | AGM | 12 | 13.9 | 13 | 151 | 98 | 95 | 101 | | T2 |
| FPC12-20 | 590505 | AGM | 12 | 20 | 18 | 181.5 | 76.5 | 167.5 | 167.5 | | T12 |
| FPC12-26 | 590506 | AGM | 12 | 26 | 24.2 | 165 | 176 | 125 | 125 | | T12 |
| FPC12-35 | 590508 | AGM | 12 | 35.4 | 33 | 195 | 130 | 164 | 182 | | T5 |
| FPC12-40 | 590509 | AGM | 12 | 40.8 | 38 | 197 | 165 | 170 | 170 | | T12/T6 |
| FPG12-31 | 591508 | GEL | 12 | 31 | 27.6 | 195 | 130 | 164 | 178 | | T5 |
| FPG12-40 | 591509 | GEL | 12 | 40 | 35 | 197 | 165 | 170 | 170 | | T6 |
| FPG12-50 | 591510 | GEL | 12 | 50 | 46.5 | 229 | 138 | 205 | 211 | | T6 |
| FPG12-70 | 591517 | GEL | 12 | 70 | 64.6 | 260 | 168 | 208 | 230 | | T6 |
| FLP12-12 | 592503 | LiFePO4 | 12.8 | - | 12 (5Hrs) | 151 | 98 | 95 | 100 | | T2 |
| FLP12-36 | 592505 | LiFePO4 | 12.8 | - | 36 (5Hrs) | 195 | 130 | 162 | 162 | | T6 |
| FLP12-40 | 592506 | LiFePO4 | 12.8 | - | 40 (5Hrs) | 195 | 165 | 175 | 175 | | T6 |

| GOLF CADDY | | | | | | | | | | | |
|-------------|--------|------------|-------------|--------------------|--------------------|----------------------|------|-------|--------------|----------|------------|
| Designation | P/N | Technology | Voltage (V) | Capacity Ah (20Hr) | Capacity Ah (10Hr) | Dimensions mm (±2mm) | | | | Polarity | Terminals* |
| | | | | | | L | W | H | Total height | | |
| FPC12-20 | 590505 | AGM | 12 | 20 | 18 | 181.5 | 76.5 | 167.5 | 167.5 | | T12 |
| FPC12-26 | 590506 | AGM | 12 | 26 | 24.2 | 165 | 176 | 125 | 125 | | T12 |
| FPC12-35 | 590508 | AGM | 12 | 35.4 | 33 | 195 | 130 | 164 | 182 | | T5 |
| FPG12-26 | 591506 | GEL | 12 | 26 | 24.2 | 166 | 175 | 125 | 125 | | T12 |
| FPG12-31 | 591508 | GEL | 12 | 31 | 27.6 | 195 | 130 | 164 | 178 | | T5 |
| FLP12-36 | 592505 | LiFePO4 | 12.8 | - | 36 (5Hrs) | 195 | 130 | 162 | 162 | | T6 |

*Terminals p.16