

FULBAT[®]

INDUSTRIAL BATTERY

INDUSTRIAL BATTERY RANGE

CATALOG 2024

AGM | GEL | LiFePO4



Feel the Power!

ABOUT US



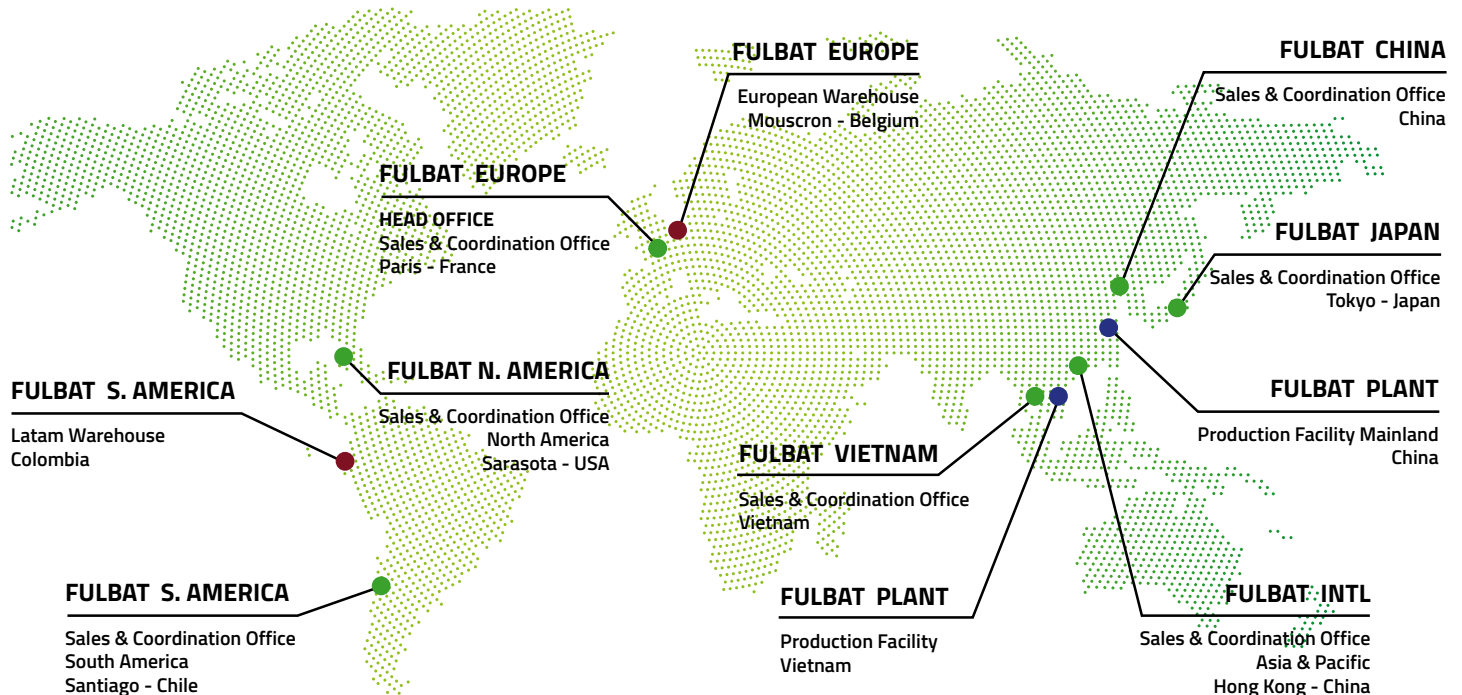
French based company, Fulbat is a leading force in the battery business, present in both replacement and OEM markets. Founded in 2005, we are constantly developing, manufacturing, marketing and selling lead-acid batteries, as well as lithium batteries and battery chargers.

With our technical knowledges and experience, we are able to design new innovative battery solutions to meet the current customers' expectations. We offer an exhaustive program of Starter batteries, Industrial batteries and Motive Power batteries, covering a full range of application. Our Industrial Battery range is designed to cover all industrial applications.

Fulbat batteries and chargers are widely distributed on all continents through a strong distributor's network, and are very well recognized as qualitative, performing and reliable products.

Manufactured according to the most innovative production processes, Fulbat products are certified by ISO 9001, ISO 14001 and TS 16949.

WORLDWIDE PRESENCE



INTRODUCTION



Fulbat Industrial Battery is composed of 2 types of batteries : Stationary and Cyclic uses.

Also called back-up batteries, the stationary batteries take over in case of electrical system failure. Always in standby, these batteries are discharged only occasionally and do not require any maintenance. These batteries can be found in many applications areas such as security, telecommunication, UPS, medical sector where no failure is allowed.

Cyclic batteries, on the other hand, are used as the main source of energy and can support many charge and discharge cycles (more or less deep, depending on the technology – AGM, GEL, Lithium). This type of battery can be found in many applications such as small mobility (golf caddy, electric wheelchair...), energy storage (solar, wind) or leisure (marine, camping-car).

APPLICATIONS

Fulbat Industrial Battery covers the wide majority of industrial applications.



GENERAL PURPOSE AGM RANGE

Maintenance free & reliable

FP Series are general purpose batteries with 5 years design life in float service (8 years from 40Ah). With advanced AGM valve regulated technology and high purity raw material, the FP series batteries ensure high performance and reliable standby service life.

GENERAL INFORMATIONS

- ↗ Use: standby / light cyclic use
- ↗ Technology: AGM (VRLA)
- ↗ Available voltages: 4V - 6V - 12V
- ↗ Capacities from 0.8Ah to 250Ah
- ↗ Design life at 20°C ambient temperature:
 - 5 years up to 33Ah
 - 10 years from 40Ah
- ↗ Case material: ABS UL94-HB / FR version (UL94-V0) in option*



NON-SPILLABLE

FEATURES

- ↗ Maintenance free & non-spillable
- ↗ AGM (Absorbent Glass Mat) technology assures no free electrolyte
- ↗ Low self-discharge rate (about 3% per month at 20°C)
- ↗ Lead calcium grids for superior life
- ↗ Operate in any orientation (excluding continuous inverted use)
- ↗ Wide range of operating temperatures
- ↗ Rugged impact resistance ABS case
- ↗ Low gas emission due to high gas recombination of 99% (VRLA)

APPLICATIONS



*compliant with fire standard EN 60950-1 on flammability and fire resistance.

Designation	P/N	Voltage (V)	Capacity Ah (20Hr)	Capacity Ah (10Hr)	Dimensions mm (±2mm)				Polarity	Terminal*
					L	W	H	Total height		
FP4-3.5	590001	4	3.5	3.3	90	34	59	65		T1
FP6-1.2	590002	6	1.2	1.1	97	24	51.5	57.5		T1
FP6-2.8	590003	6	2.8	2.6	66	33	97	103		T1
FP6-3.2	590004	6	3.2	3	134	34	60	66		T1
FP6-4	590005	6	4	3.7	70	47	100	106		T1
FP6-4.5	590006	6	4.5	4.2	70	47	100	106		T1
FP6-6	590007	6	6	5.6	70	47	100	106		T1
FP6-4.5S	590008	6	4.5	4.2	67	67	96	109	-	S
FP6-5	590009	6	5	4.7	169.5	34.5	70	74		T1
FP6-7.2	590010	6	7.2	6.7	150	34	94	100		T1
FP6-10	590011	6	10	9.3	151	50.5	94	100		T1
FP6-12	590012	6	12	11.2	151	50.5	94	100		T2
FP12-0.8	590014	12	0.8	0.8	96	25	62	62		JST
FP12-0.8FR (1)	590059	12	0.8	0.8	96	25	62	62		JST
FP12-1.2	590015	12	1.2	1.1	97	43	52	58		T1
FP12-1.2FR (1)	590060	12	1.2	1.1	97	43	52	58		T1
FP12-2.2	590017	12	2.2	2.1	70.5	47.5	97	103		T1
FP12-2.3	590018	12	2.3	2.1	178	35	60	66		T1
FP12-2.3FR (1)	590061	12	2.3	2.1	178	35	60	66		T1
FP12-2.3C	590019	12	2.3	2.1	182	24	61	61	-	Contacts
FP12-2.6	590020	12	2.6	2.3	178	35	60	66		T1
FP12-2.9	590021	12	2.9	2.7	79	56	99	105		T1
FP12-3.2	590022	12	3.2	3	134	67	59.5	65.5		T1
FP12-4L	590023	12	4	3.7	195	47	70	76		T1
FP12-4.5	590071	12	4.5	4.2	90	70	101	107		T1
FP12-4.5FR (1)	590024	12	4.5	4.2	90	70	101	107		T1
FP12-5.4	590025	12	5.4	5	90	70	101	107		T2
FP12-5	590026	12	5.4	4.7	151	53	93	99		T1
FP12-5.5	590027	12	5.5	4.7	151	53	93	99		T2 + T1
FP12-7.2	590028	12	7.2	6.7	151	65	93.5	99.5		T1
FP12-7.2FR (1)	590062	12	7.2	6.7	151	65	93.5	99.5		T1
FP12-9	590031	12	9	8.3	151	65	93.5	99.5		T2
FP12-10H	590032	12	10	9.3	151	65	111	117		T2
FP12-12	590033	12	12	11.2	151	98	95	101		T2
FP12-12FR (1)	590063	12	12	11.2	151	98	95	101		T2
FP12-18	590035	12	18	16.7	181.5	76.5	167.5	167.5		T12
FP12-18FR (1)	590064	12	18	16.7	181.5	76.5	167.5	167.5		T12
FP12-20	590037	12	20	18.6	181.5	77	167.5	167.5		T12
FP12-24	590038	12	24	22.3	167	175	125	125		T12
FP12-24FR (1)	590065	12	24	22.3	167	175	125	125		T12
FP12-33	590042	12	33	30.7	195	130	164	178		T6
FP12-40	590043	12	40	38	197	165	170	170		T6
FP12-40FR (1)	590066	12	40	38	197	165	170	170		T6
FP12-50	590044	12	50	48	197	165	170	170		T6
FP12-55	590045	12	55	52	257	132	200	200		T6
FP12-60	590046	12	60	56	229	138	205	211		T6
FP12-65	590047	12	65	62.1	348	167	178	178		T6
FP12-65FR (1)	590069	12	65	62.1	348	167	178	178		T6
FP12-75	590050	12	75	73	348	167	178	178		T6
FP12-80	590051	12	80	78	260	168	208	214		T6
FP12-100	590053	12	104	100	330	173	212	220		T11

(1) Conformed to UL94-V0 (Flame retardant)

*Terminals p.16

FRONT TERMINAL AGM RANGE

Easy to install & maintain

FFT batteries are designed for applications that demand high levels of reliability and safety, FFT batteries offer a long service life up to 12 years. Thanks to their front terminal design, these batteries allow rapid installation and easy access for maintenance.

GENERAL INFORMATIONS

- ↗ Use: standby
- ↗ Technology: AGM (VRLA)
- ↗ Available voltage: 12V
- ↗ Capacities from 100Ah to 190Ah
- ↗ 12 years design life at 25°C ambient temperature
- ↗ Case material: ABS UL94-HB / FR version (UL94-V0) in option*





NON-SPILLABLE 

FEATURES

- ↗ Front access to terminals
- ↗ Installation, maintenance and supervision easy
- ↗ Ideal for 48V system
- ↗ Ideal for 19" or 23" racks or site cabinets
- ↗ Maintenance free & non-spillable
- ↗ AGM (Absorbent Glass Mat) technology assures no free electrolyte
- ↗ Low self-discharge rate (about 3%/month at 20 °C)
- ↗ Wide range of operating temperatures
- ↗ Low gas emission due to high gas recombination of 99% (VRLA)

APPLICATIONS



Designation	P/N	Voltage (V)	Capacity Ah (20Hr)	Capacity Ah (10Hr)	Dimensions mm (±2mm)				Polarity	Terminal*
					L	W	H	Total height		
FFT12-100	590067	12	106	100	508	110	238.5	238.5		T6
FFT12-150	590068	12	157.6	150	551	110	288	288		T6

*compliant with fire standard EN 60950-1 on flammability and fire resistance.

*Terminals p.16

HIGH RATE AGM RANGE

Maintenance free & reliable

FPH Series are high rate batteries with 12 years design life in float service. With advanced AGM valve regulated technology and high purity raw material, the FPH batteries ensure reliable standby service life and high performance during high current discharge requirements.

GENERAL INFORMATIONS

- Use: standby
- Technology: AGM (VRLA)
- Available voltage: 12V
- Capacities from 9Ah to 46.5Ah
- 12 years design life at 25°C ambient temperature
- Case material: ABS UL94-HB / FR version (UL94-V0) in option*

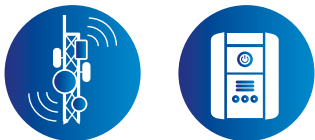


NON-SPILLABLE

FEATURES

- Excellent high rate discharge performance
- 12 years design life at 25°C (5 years for FPH12-35W)
- Maintenance free & non-spillable
- AGM (Absorbent Glass Mat) technology assures no free electrolyte
- Low self-discharge rate (about 3% / month at 25°C)
- Wide range of operating temperatures
- Low gas emission due to high gas recombination of 99% (VRLA)

APPLICATIONS



Designation	P/N	Voltage (V)	Capacity Ah (20Hr)	Capacity Ah (5Hr)	W/cell (10min) 1.6VPC at 25°C (W)	Dimensions mm (±2mm)				Polarity	Terminal*
						L	W	H	Total height		
FPH12-35W	590073	12	9	7.9	45.5	151	65	93.5	99		T2
FPH12-750W	590074	12	26	21.9	126.1	166	175	125	125		T12
FPH12-1100W	590075	12	46.5	45	185.9	197	165	170	170		T6

*compliant with fire standard EN 60950-1 on flammability and fire resistance.

*Terminals p.16

CYCLIC AGM RANGE

Robust & long cycle life

FPC Series are deep cycle batteries specially designed for long duration cyclic applications (where the battery is frequently charged and discharged). With advanced AGM valve regulated technology and oversized negative plates, the FPC Series ensure very good cyclic performance with greater depth of discharge for mobility-type applications such as medical, golf and also renewable energies storage.

GENERAL INFORMATIONS

- ↗ Use: cyclic use
- ↗ Technology: AGM (VRLA)
- ↗ Available voltages: 6V - 12V
- ↗ Capacities from 8Ah to 200Ah
- ↗ Cycle life:
 - Up to 350 cycles at 100% DOD* (50% capacity @20°C)
 - Up to 800 cycles at 50% DOD* (50% capacity @20°C)
- ↗ Case material: ABS UL94-HB

*Depth Of Discharge



NON-SPILLABLE

**CYCLE LIFE
UP TO
800**

FEATURES

- ↗ Maintenance free & non-spillable
- ↗ High cyclic performances: x2 compared to AGM standard batteries
- ↗ Over dimensioned negative plate & enhanced conception for longer cycle life
- ↗ Good recovery from deep discharge
- ↗ Lead calcium grids for superior life
- ↗ Lower internal resistance for higher current discharge
- ↗ Low self-discharge rate (about 3% per month at 20°C)
- ↗ Wide range operating temperatures
- ↗ Operation in any orientation (excluding continuous inverted use)
- ↗ Robust construction: strong resistance to vibrations
- ↗ Low gas emission due to high gas recombination of 99% (VRLA)

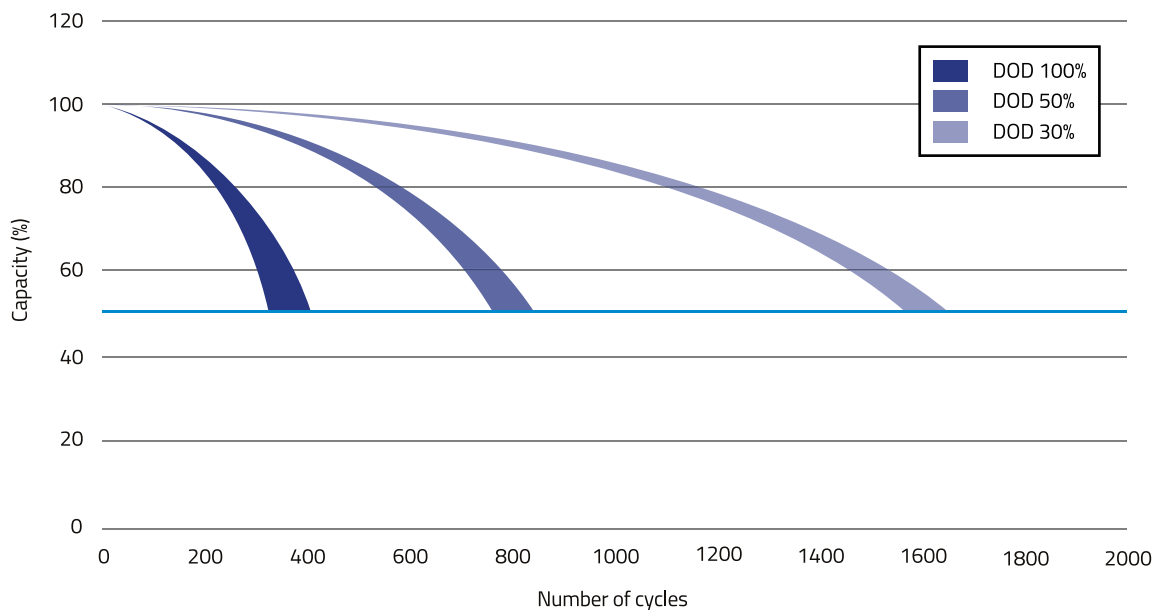


APPLICATIONS



Designation	P/N	Voltage (V)	Capacity Ah (20Hr)	Capacity Ah (10Hr)	Dimensions mm (±2mm)				Polarity	Terminal*
					L	W	H	Total height		
FPC6-13	590501	6	13.9	13	151	50.5	94	100		T2
FPC12-8	590502	12	8	7.2	151	65	93.5	99.5		T2
FPC12-13	590504	12	13.9	13	151	98	95	101		T2
FPC12-20	590505	12	20	18	181.5	76.5	167.5	167.5		T12
FPC12-26	590506	12	26	24.2	165	176	125	125		T12
FPC12-28	590507	12	28	26	166	175	125	125		T12
FPC12-35	590508	12	35.4	33	195	130	164	182		T6
FPC12-40	590509	12	40.8	38	197	165	170	170		T6
FPC12-60	590510	12	60	56	229	138	210	210		T6
FPC12-80	590511	12	80.4	75	260	168	208	214		T6
FPC12-100	590512	12	107.2	100	330	173	212	220		T11
FPC12-120	590513	12	128.6	120	408	177	225	225		T11
FPC12-160	590514	12	160.8	150	483	170	238.5	238.5		T11
FPC12-200	590515	12	214.4	200	522	240	218	224		T11

CYCLE LIFE



PACKAGING

Are delivered in color box:

- FPC12-13
- FPC12-20
- FPC12-26
- FPC12-35



*Terminals p.16

CYCLIC GEL RANGE

Ideal in harsh conditions

FPG Series are deep cycle batteries specially designed for long duration cyclic applications (where the battery is frequently charged and discharged), ie with use in charge and then intensive discharge. With innovative GEL valve regulated technology and special plate design, the FPG Series ensure higher cyclic performance and higher recovery capability after deep discharge than cyclic AGM batteries.

GENERAL INFORMATIONS

- ↗ Use: cyclic use
- ↗ Technology: GEL (VRLA)
- ↗ Available voltage: 12V
- ↗ Capacities from 26Ah to 200Ah
- ↗ Cycle life:
 - Up to 550 cycles at 100% DOD* (50% capacity @20°C)
 - Up to 1100 cycles at 50% DOD* (50% capacity @20°C)
- ↗ Case material: ABS UL94-HB

*Depth Of Discharge



NON-SPILLABLE

**CYCLE LIFE
UP TO
1100**

FEATURES

- ↗ Maintenance free & non-spillable
- ↗ High cyclic performances: x3 compared to AGM standard batteries
- ↗ High recovery from deep discharge
- ↗ Very low self-discharge rate (about 2% per month at 20°C)
- ↗ Wide range of operating temperatures - superior to AGM
- ↗ Higher operating temperature & depth of discharge: ideal in harsh conditions
- ↗ Operation in any orientation (excluding continuous inverted use)
- ↗ Rugged impact resistance
- ↗ No electrolyte stratification phenomenon
- ↗ Low gas emission due to high gas recombination of 99% (VRLA)

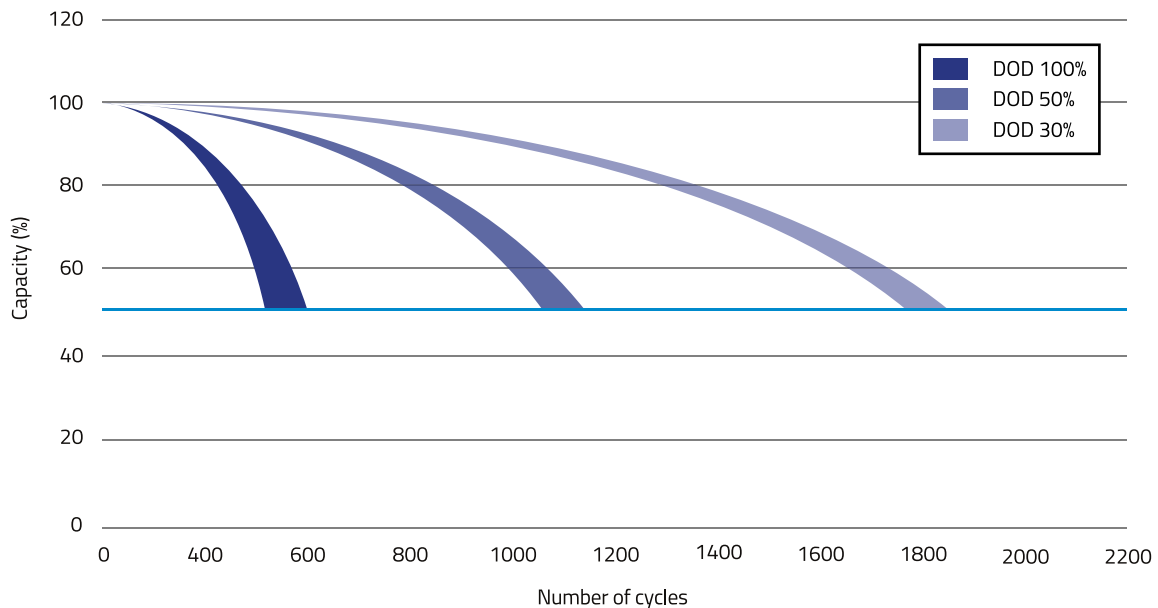


APPLICATIONS



Designation	P/N	Voltage (V)	Capacity Ah (20Hr)	Capacity Ah (10Hr)	Dimensions mm (±2mm)				Polarity	Terminals*
					L	W	H	Total height		
FPG12-26	591506	12	26	24.2	166	175	125	125		T12
FPG12-31	591508	12	31	27.6	195	130	164	178		T6
FPG12-40	591509	12	40	35	197	165	170	170		T6
FPG12-50	591510	12	50	46.5	229	138	205	211		T6
FPG12-60	591511	12	60	55	260	168	173	179		T6
FPG12-70	591517	12	70	64.6	260	168	208	214		T6
FPG12-85	591518	12	85	80	306	168	208	214		T6
FPG12-90 (L5)	591520	12	90	84	353	175	190	190		Auto
FPG12-100	591512	12	100	90	330	173	212	218		T11
FPG12-130	591519	12	130	125	345	172	274	280		T11
FPG12-140	591514	12	140	135	483	170	238.5	238.5		T11
FPG12-200	591515	12	200	190	522	240	218	224		T11
FPG12-250	591516	12	258	250	522	268	220	226		T11

CYCLE LIFE



PACKAGING

Are delivered in color box:

- FPG12-26
- FPG12-31



*Terminals p.16

HIGH CYCLIC LiFePO4 RANGE

High performance & light weight

FLP Series are Lithium Iron Phosphate (LiFePO4) batteries specially designed to replace lead acid batteries thanks to their standard size cases and their similar charging voltage.

The FLP Series offer many advantages compared to lead acid in terms of weight, cyclic performance, safety and power.

GENERAL INFORMATIONS

- ↗ Use: cyclic use
- ↗ Technology: Lithium Iron Phosphate (LiFePO4)
- ↗ Available voltages: 6V - 12V
- ↗ Capacities from 6Ah to 200Ah
- ↗ Cycle life:
 - Up to 2000 cycles at 100% DOD* (50% capacity @20°C)
 - Up to 4000 cycles at 80% DOD* (50% capacity @20°C)
- ↗ Case material: ABS UL94-HB

*Depth Of Discharge

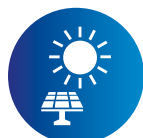


FEATURES

- ↗ High cyclic performances: x10 compared to AGM standard batteries
- ↗ Lighter weight: 60% lighter than lead acid battery
- ↗ Very high recovery from deep discharge – up to 100% DOD (vs 50% to 80% for AGM)
- ↗ Very high charge and discharge current accepted (to 10 times faster than lead acid batteries)
- ↗ Protection circuit integrated (PCM): overcharge protection, overdischarge protection, temperature protection & balancing function
- ↗ Wide range of operating temperatures: from -20°C to +60°C
- ↗ Safety: non-spillable, no acid in the battery, no risk of explosion, no gas emission
- ↗ Operation in any orientation
- ↗ PSOC: Partial State Of Charge accepted
- ↗ Low self-discharge rate (about 3% per month at 20°C)
- ↗ Can be charged with a standard lead acid charger (without desulphation step)
- ↗ Power and volume ratio yielding unrivalled energy density

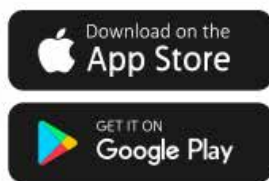
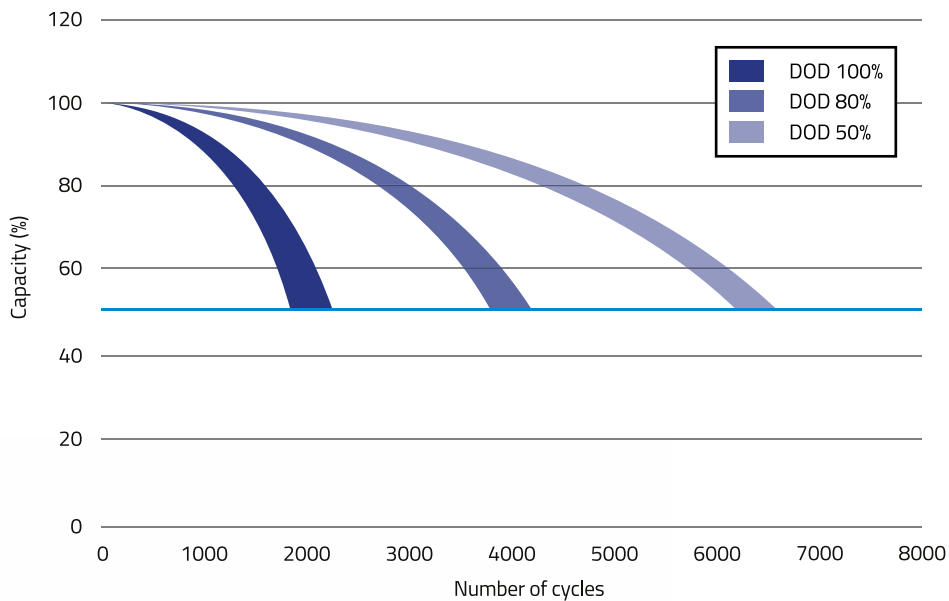


APPLICATIONS



Designation	P/N	Voltage (V)	Capacity Ah (5Hr)	Dimensions mm (±2mm)				Polarity	Terminals*
				L	W	H	Total height		
FLP6-6	592501	6.4	6	70	47	101	105		T2
FLP12-9	592502	12.8	9	151	65	94	99		T2
FLP12-12	592503	12.8	12	151	98	95	100		T2
FLP12-24	592511	12.8	24	181	77	167	167		T12
FLP12-36	592505	12.8	36	195	130	162	162		T6
FLP12-40	592506	12.8	40	195	165	175	175		T6
FLP12-65	592507	12.8	60	229	138	217	217		T6
FLP12-84	592515	12.8	84	260	169	213	218		T11
FLP12-100	592508	12.8	100	326	171.7	212	212		T11
FLP12-100B	592512	12.8	100	353	175	190	190		Auto
FLP12-150	592509	12.8	150	483	170	238	238		T11
FLP12-200	592510	12.8	200	521	233	220	220		T11

CYCLE LIFE



Fulbat LiFePo4 Battery Monitor



*Terminals p.14

MARINE DUAL PURPOSE RANGE

Non-spillable & maintenance free

FDM Series are dual purpose batteries designed to offer both superior starting and cycling performance for marine & leisure applications. Featuring a spill-proof & maintenance-free design, these batteries boast low self-discharge and an extended service life, resisting cycles with high durability. Infused with carbon additives, they function effectively even without reaching full charge.

GENERAL INFORMATIONS

- ↙ Use : starter / cyclic use
- ↙ Technology: AGM Carbon (VRLA)
- ↙ Available voltage: 12V
- ↙ Capacity from 79 to 240Ah
- ↙ Cycle life:
 - Up to 450 cycles at 100% DOD* (50% capacity @20°C)
 - Up to 850 cycles at 50% DOD* (50% capacity @20°C)
- ↙ Case material: polypropylene



FEATURES

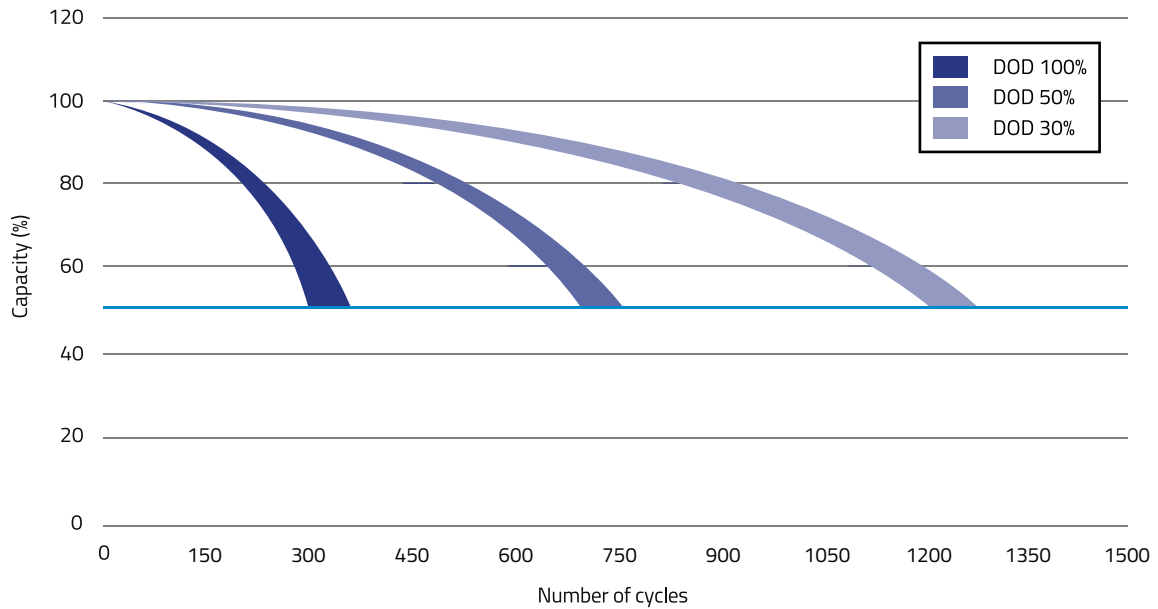
- ↙ Dual Purpose AGM technology (VRLA)
- ↙ Non spillable and maintenance free
- ↙ Superior starting & cycling performance
- ↙ Carbon additives to perform in Partial State of Charge (PSOC) and to increase charge acceptance
- ↙ High vibration resistance
- ↙ Low self-discharge rate for longer shelf life

APPLICATIONS



Designation	P/N	Box size	Voltage (V)	Capacity Ah (20Hr)	CCA (A)	Dimensions mm (± 2 mm)				Polarity	Terminal*
						L	W	H	Total height		
FDM12-550-M24	590516	24	12	79	550	260	168	208	233		DUAL
FDM12-800-M27	590517	27	12	92	800	306	168	208	233		DUAL
FDM12-825-M31	590518	31	12	105	825	330	173	212	237		DUAL
FDM12-700	590519	-	12	140	700	512	188	196	218		AUTO
FDM12-900	590520	-	12	180	900	512	222	196	106		AUTO
FDM12-1000	590521	-	12	240	1000	517	272	218	240		AUTO

CYCLE LIFE



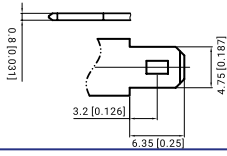
*Terminals p.16

TERMINALS & LAYOUTS RANGE

TERMINALS DETAILS

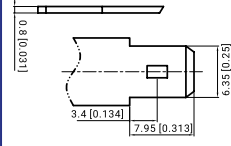
T1 terminal

Faston type (copper) quick disconnect tabs, silver coating for better conductivity



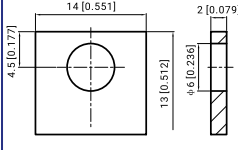
T2 terminal

Faston type (copper) quick disconnect tabs, silver coating for better conductivity



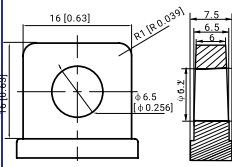
T3 terminal

Brass coated with tin



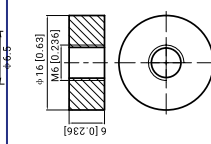
T5 terminal

Lead



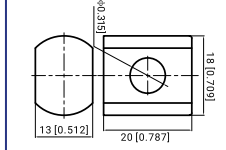
T6 terminal

Copper, Threaded Insert 6mm stud



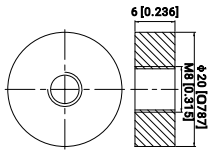
T9 terminal

Lead



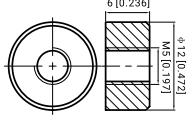
T11 terminal

Copper, threaded Insert 8mm stud



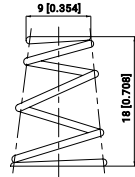
T12 terminal

Copper, threaded insert 5mm stud



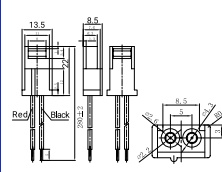
Spring terminal

Spring steel, fully collapsible



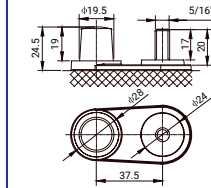
JST

Toy battery connector H-Connector



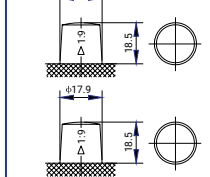
DUAL

Bolt terminal



AUTO

Lead



Bolts are included for each battery

(in mm)

3D TERMINALS

T1 terminal



T2 terminal



T3 terminal



T5 terminal



T6 terminal



T9 terminal



T11 terminal



T12 terminal



T13 terminal



JST



DUAL



AUTO



ACCESSORIES



T11 to automotive adapter



T6 to automotive adapter



T1 to T2 adapter

MAIN BATTERIES BY APPLICATION

SECURITY											
Designation	P/N	Technology	Voltage (V)	Capacity Ah (20Hr)	Capacity Ah (10Hr)	Dimensions mm (±2mm)				Polarity	Terminals*
						L	W	H	Total height		
FP12-1.2	590015	AGM	12	1.2	1.1	97	43	52	58		T1
FP12-2.3	590018	AGM	12	2.3	2.1	178	35	60	66		T1
FP12-3.2	590022	AGM	12	3.2	3.0	134	67	59.5	65.5		T1
FP12-7.2	590028	AGM	12	7.2	6.7	151	65	93.5	99.5		T1
FP12-12	590033	AGM	12	12	11.2	151	98	95	101		T2
FP12-18	590035	AGM	12	18	16.7	181.5	76.5	167.5	167.5		T12

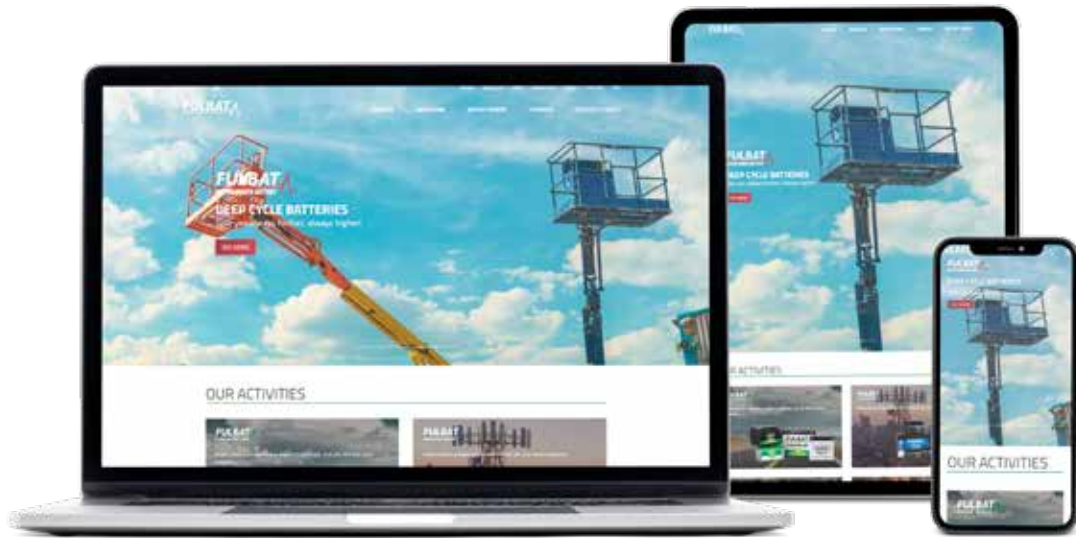
UPS											
Designation	P/N	Technology	Voltage (V)	Capacity Ah (20Hr)	Capacity Ah (10Hr)	Dimensions mm (±2mm)				Polarity	Terminals*
						L	W	H	Total height		
FP6-7.2	590028	AGM	6	7.2	6.7	150	34	94	100		T1
FP12-5.4	590025	AGM	12	5.4	5.0	90	70	101	107		T2
FP12-5.5	590027	AGM	12	5.5	4.7	151	53	93	99		T2 + T1
FP12-9	590031	AGM	12	9	8.3	151	65	93.5	99.5		T2
FP12-18	590035	AGM	12	18	16.7	181.5	76.5	167.5	167.5		T12

MEDICAL											
Designation	P/N	Technology	Voltage (V)	Capacity Ah (20Hr)	Capacity Ah (10Hr)	Dimensions mm (±2mm)				Polarity	Terminals*
						L	W	H	Total height		
FP6-1.2	590002	AGM	6	1.2	1.1	97	24	51.5	57.5		T1
FP6-3.2	590004	AGM	6	3.2	3.0	134	34	60	66		T1
FP6-4.5	590006	AGM	6	4.5	4.2	70	47	100	106		T1
FP6-10	590011	AGM	6	10	9.3	151	50.5	94	100		T1
FP12-1.2	590015	AGM	12	1.2	1.1	97	43	52	58		T1
FP12-2.3	590018	AGM	12	2.3	2.1	178	35	60	66		T1
FP12-3.2	590022	AGM	12	3.2	3.0	134	67	59.5	65.5		T1
FP12-7.2	590028	AGM	12	7.2	6.7	151	65	93.5	99.5		T1
FP12-18	590035	AGM	12	18	16.7	181.5	76.5	167.5	167.5		T12

MOBILITY											
Designation	P/N	Technology	Voltage (V)	Capacity Ah (20Hr)	Capacity Ah (10Hr)	Dimensions mm (±2mm)				Polarity	Terminals*
						L	W	H	Total height		
FPC12-13	590504	AGM	12	13.9	13	151	98	95	101		T2
FPC12-20	590505	AGM	12	20	18	181.5	76.5	167.5	167.5		T12
FPC12-26	590506	AGM	12	26	24.2	165	176	125	125		T12
FPC12-35	590508	AGM	12	35.4	33	195	130	164	182		T5
FPC12-40	590509	AGM	12	40.8	38	197	165	170	170		T12/T6
FPG12-31	591508	GEL	12	31	27.6	195	130	164	178		T5
FPG12-40	591509	GEL	12	40	35	197	165	170	170		T6
FPG12-50	591510	GEL	12	50	46.5	229	138	205	211		T6
FPG12-70	591517	GEL	12	70	64.6	260	168	208	230		T6
FLP12-12	592503	LiFePO4	12.8	-	12 (5Hrs)	151	98	95	100		T2
FLP12-36	592505	LiFePO4	12.8	-	36 (5Hrs)	195	130	162	162		T6
FLP12-40	592506	LiFePO4	12.8	-	40 (5Hrs)	195	165	175	175		T6

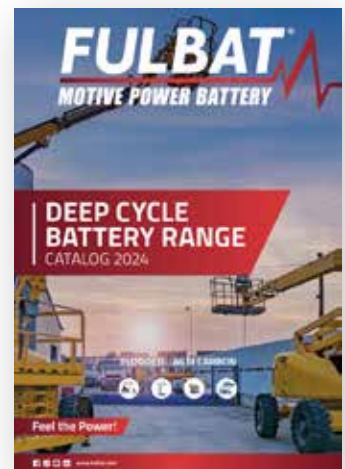
GOLF CADDY											
Designation	P/N	Technology	Voltage (V)	Capacity Ah (20Hr)	Capacity Ah (10Hr)	Dimensions mm (±2mm)				Polarity	Terminals*
						L	W	H	Total height		
FPC12-20	590505	AGM	12	20	18	181.5	76.5	167.5	167.5		T12
FPC12-26	590506	AGM	12	26	24.2	165	176	125	125		T12
FPC12-35	590508	AGM	12	35.4	33	195	130	164	182		T5
FPG12-26	591506	GEL	12	26	24.2	166	175	125	125		T12
FPG12-31	591508	GEL	12	31	27.6	195	130	164	178		T5
FLP12-36	592505	LiFePO4	12.8	-	36 (5Hrs)	195	130	162	162		T6

*Terminals p.16



Visit our website for more information
www.fulbat.com

DISCOVER **FULBAT** RANGES



Release 2024.04