

FPG12-100

Datasheet

FULBAT®

INDUSTRIAL BATTERY



SPECIFICATIONS

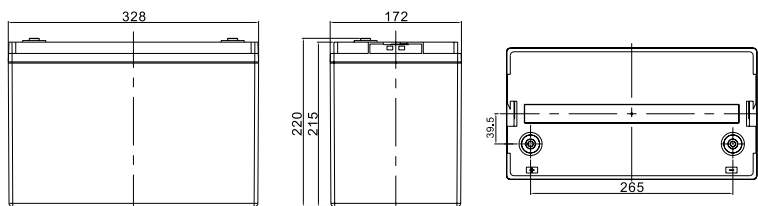
Nominal voltage	12V (6 cells)
Nominal capacity	100.0Ah (20hr)
Cycle life	Up to 550 cycles at 100% DOD Up to 1100 cycles at 50% DOD
Internal resistance	Approx 8.5mΩ
Terminal	T11
Max. discharge current	1000A (5 sec)
Reference capacity	100.0Ah (20hr, 1.80V/cell, 25°C) 90.0Ah (10hr, 1.80V/cell, 25°C) 75.0Ah (5hr, 1.75V/cell, 25°C) 66.0Ah (3hr, 1.75V/cell, 25°C)
Charge voltage	13.38V ~ 13.50V 25°C
Standby use voltage	Temperature compensation: -3mV/°C/Cell
Cycle use voltage	13.80V ~ 14.10V 25°C Temperature compensation: -4mV/°C/Cell
Operating temp. range	Discharge: -40°C ~ 60°C Charge: 0°C ~ 50°C Storage: -20°C ~ 60°C
Nominal operating temp. range	25°C ± 3°C
Self discharge	Can be stored for up to 6 months at 25°C and then recharging is recommended. Monthly self-discharge ratio is less than 3% at 25°C
Capacity affected by temp.	40°C 103% 25°C 100% 0°C 86%
Container material	A.B.S. UL94-HB UL94-V0 optional



FPG Series are deep cycle batteries specially designed for long duration cyclic applications, ie with use in charge and then intensive discharge. With innovative GEL valve regulated technology and special plate design, the FPG Series ensure higher cyclic performance and higher recovery capability after deep discharge than cyclic AGM batteries. This range is ideal for applications such as mobility, golf, marine & leisure and renewable energies storage.

DIMENSIONS & WEIGHT

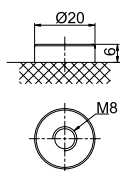
Length	328±2mm
Width	172±2mm
Total height	220±2mm
Gross weight	29kg



APPROVALS

ISO9001 - Quality management system
 ISO14001 - Environmental management System
 Approved for transport by Air (IATA)
 Designed in accordance with IEC 60896-21/22

TERMINAL



APPLICATIONS



Mobility



Golf caddy



Leisure & Marine

FPG12-100

Datasheet



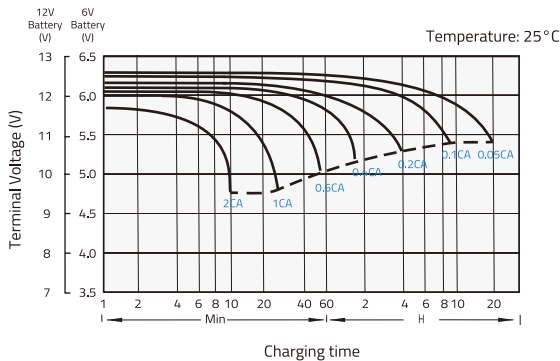
CONSTANT CURRENT DISCHARGE (A) @25°C

F.V/Time	10min	15min	30min	1h	2h	3h	4h	5h	8h	10h	20h
1.60V/cell	163.7	132.8	87.1	54.3	33.2	24.9	19.8	16.7	11.3	9.28	5.20
1.65V/cell	154.7	126.9	83.6	52.4	32.1	24.1	19.3	16.2	11.1	9.17	5.12
1.70V/cell	142.4	118.9	79.9	50.7	31.1	23.5	18.8	15.8	11.0	9.03	5.06
1.75V/cell	130.4	110.6	76.4	48.9	30.0	22.8	18.3	15.4	10.8	8.91	5.00
1.80V/cell	118.0	102.2	73.0	47.0	28.9	22.0	17.8	15.0	10.6	8.80	4.95
1.85V/cell	96.4	84.8	62.9	42.2	26.5	20.4	16.5	14.0	10.0	8.28	4.70

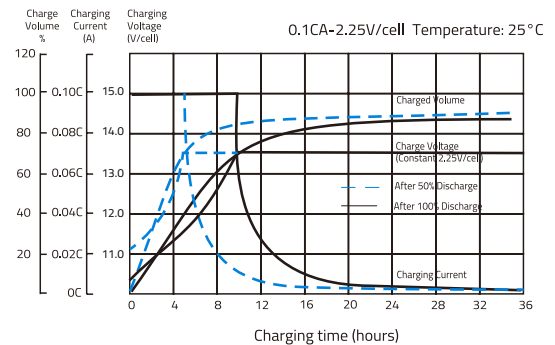
CONSTANT POWER DISCHARGE (W/CELL) @25°C

F.V/Time	10min	15min	30min	1h	2h	3h	4h	5h	8h	10h	20h
1.60V/cell	278.3	232.1	158.2	102.0	62.9	47.5	38.1	32.1	22.0	18.2	10.2
1.65V/cell	264.8	223.1	153.2	99.3	61.2	46.3	37.2	31.4	21.7	18.0	10.1
1.70V/cell	251.3	214.1	148.2	96.5	59.5	45.2	36.3	30.7	21.5	17.8	10.0
1.75V/cell	234.2	202.1	143.1	93.5	57.7	44.0	35.5	30.0	21.2	17.6	9.88
1.80V/cell	215.7	189.3	138.2	90.5	55.9	42.8	34.6	29.3	20.9	17.4	9.79
1.85V/cell	179.4	159.3	120.2	81.6	51.5	39.8	32.3	27.4	19.7	16.4	9.31

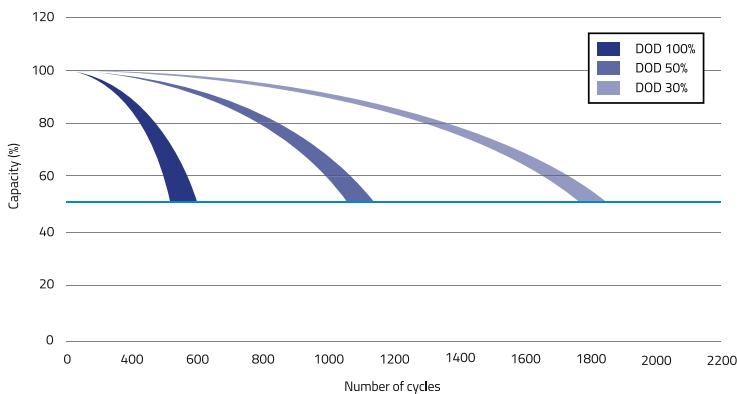
DISCHARGE CHARACTERISTICS



FLOAT CHARGING CHARACTERISTICS



CYCLE LIFE IN RELATION TO DEPTH OF DISCHARGE



TEMPERATURE ON LONG TERM FLOAT LIFE

